

School Organisation Data Book

2014/2015 to 2018/2019

CONTENTS

	Page
INTRODUCTION	5
SEFTON	6-9
Structure and Characteristics of School Provision	8
PART A: DEMOGRAPHIC INFORMATION RELEVANT TO THE SUPPLY OF SCHOOL PLACES	10-26
Trends in Pupil Numbers	12-26
Methodology Used for Forecasting Pupil Numbers	12
Trends in Primary Pupil Numbers	15
Trends in Secondary Pupil Numbers	19
Changes in School Organisation Currently in Progress	26
Primary Schools	26
Secondary Schools	26
PART B: DATA FOR GEOGRAPHICAL AREAS	27-44
Areas of Sefton	29-44
Bootle	30
Litherland	33
Crosby	35
Formby	37
Maghull and Aintree	39
Southport	41
ANNEXES	45-89
Annex 1: Pupil Numbers and School Places	47-64
Annex 2: Changes in School Organisation	65-71
Annex 3: School Places in 2014	72-84
Annex 4: Denominational Provision: the Catholic Church	84-88
Annex 5: Denominational Provision: the Church of England	89

INTRODUCTION

The data in this booklet is based on the School Census January 2014 and May 2014, the School Capacity Return 2014 (formerly known as the Surplus Places Return) and the birth data for 2012 and previous years from the Office for National Statistics (ONS). The pupil projections are the figures supplied to the Education Funding Agency as part of the School Capacity Return 2014. Part B: Data for Geographical Areas also includes the October 2014 School Census data.

Figure 1



Structure and Characteristics of School Provision

At the end of the 2013/2014 academic year there were 19 (11 to 16 and 11 to 18) secondary schools (including 7 academies, 1 free school), 1 sixth form college, 70 primary schools, 3 infant schools, 2 junior schools, 5 special schools and 4 nursery schools in Sefton. 46 primary and infant schools have nursery units. Full details of the structure and characteristics of Sefton's school provision at May 2014 are provided in Table 1.

Table 1: School Provision in Sefton

Number of Nursery Schools	4
Total Number of Maintained Primary Schools	75
Infant Schools	3
Junior Schools	2
Primary Schools	70
Primary Schools with nursery units	46
Community Primary Schools	34
Church of England Voluntary Controlled Primary Schools	6
Church of England Voluntary Aided Primary Schools	10
Catholic Voluntary Aided Primary Schools	25
Total Number of Maintained Secondary Schools	11
Community 11-16 Secondary Schools	4
Community 11-18 Secondary Schools	0
Catholic Voluntary Aided 11-16 Schools	2
Catholic Voluntary Aided 11-18 Schools	4
CE Voluntary Aided 11-16 Schools	0
CE Voluntary Aided 11-18 Schools	1
Community 6 th Form College	1
Academies	7
11 - 16	2
11 - 18	5
Free School	
11 -16	1
Total Number of Special Schools	5
Total Number of Pupil Referral Units	2

The denominational sector is very strong in Sefton, particularly in the primary phase where community schools form 45.4% of the total, 33.3% of the schools are Catholic and 21.3% are Church of England. In the Secondary phase, six of the 18 (33%) high schools are Catholic aided schools and only one high school (5%) has Church of England aided status. In 2011/12 seven of Sefton's high schools converted to academy status. The Hawthorne's Free School opened on 1 September 2012.

Pre-school provision is provided through a combination of nursery schools, nursery units in primary schools, private nurseries and playgroups etc. There are 11 Children's Centres and 8 satellite centres in some of the most deprived areas of the Borough.

At present, the size of the primary schools in Sefton varies from less than 100 pupils to 4 FE primary schools and 4 FE infant and junior schools. (Note FE:

Forms of Entry; traditionally regarded as a unit of 30 pupils). Over recent years a number of infant and junior schools have been amalgamated to form primary schools.

All except two of the 19 secondary schools in Sefton are co-educational. Two academies in Southport are single sex, one for boys and one for girls.

Ten of the secondary schools have a sixth form. South Sefton College provides post-16 education for pupils in the Bootle and Litherland areas. The remaining 11-18 schools are located in the central area of the Borough with the exception of one in Southport. In Southport the vast majority of sixth formers attend sixth form college whilst provision is made for Catholic students at Christ the King High School. In all parts of the Borough a number of sixth formers continue their studies in one of the two Further Education colleges.

There are two pupil referral units which provide education for excluded pupils and those at risk of exclusion. From 1 September 2013 the provision has been re-organised so that one provides for primary pupils (KS1-KS2) and the other secondary (KS3-KS4).

PART A

DEMOGRAPHIC INFORMATION

RELEVANT TO THE

SUPPLY OF SCHOOL PLACES

TRENDS IN PUPIL NUMBERS

Each year, the Authority produces forecasts for the following 5 years based on information from a variety of sources. The figures for primary pupil numbers are for January whilst those for secondary are for September when numbers are at their highest.

Methodology Used for Forecasting Pupil Numbers

Each year, following the completion of the January School Census Return which provides details of pupil numbers, projections of primary and secondary pupil numbers for the following years are updated.

The projections are based upon:

- the number of births in Sefton in the relevant year;
- pupil numbers, based upon School Census in January and October;
- trends in the pattern of admissions.

Primary Pupil Numbers

Forecasts of primary pupil numbers are based upon actual and estimated birth data provided by the Office for National Statistics (ONS). Each year, the LEA receives details of the actual mid year births, by ward, and all projections are updated accordingly. This however does not allow pupil numbers to be estimated for the whole of the planning period. Forecasts for these later years are based upon birth estimates provided by ONS and trends for each area.

The birth projections provided by ONS are updated every three or four years. The most recent projections available are the 2010 based figures. The most recent figures for actual births are for 2012 and this figure is lower than the ONS 1993 based projections. The complexity of the relationship is indicated by the figures in Table 2.

Table 2: Actual and Projected Births in Sefton

Year	Actual Births	ONS 1993 Based Projections	ONS 1996 Based Projections	ONS 2004 Based Projections	ONS 2010 Based Projections
1993	3,325	*	*	*	*
1994	3,176	3,536	*	*	*
1995	3,030	3,530	*	*	*
1996	3,018	3,512	*	*	*
1997	3,086	3,486	3,000	*	*
1998	2,879	3,449	3,000	*	*
1999	2,738	3,402	2,900	*	*
2000	2,701	3,354	2,900	*	*
2001	2,640	3,313	2,800	*	*
2002	2,557	3,277	2,800	*	*
2003	2,757	3,248	2,700	*	*
2004	2,727	3,226	2,700	*	*
2005	2,584	3,214	2,600	2,800	*
2006	2,713	3,208	2,600	2,700	*
2007	2,755	3,208	2,600	2,700	*
2008	2,718	3,209	2,600	2,600	*
2009	2,848	3,211	2,600	2,600	*
2010	2,862	3,212	2,600	2,600	*
2011	2,802	3,212	2,600	2,600	2,900
2012	2,795	3,212	2,600	2,700	2,900
2013			2,500	2,700	2,900
2014			2,500	2,700	2,900
2015			2,500	2,700	2,900
2016				2,700	3,000
2017				2,700	3,000
2018					3,000
2019					3,000
2020					3,000

Birth data is adjusted to relate to school years (i.e. September to the following August) rather than calendar years and these figures are provided in Table 3.

Table 3: Actual and Projected Births in Sefton

Birth Year	School Admission Year	Total Number of Births	Status of Births Data
1995/1996	2000/2001	3,024	Actual
1996/1997	2001/2002	3,052	Actual
1997/1998	2002/2003	2,983	Actual
1998/1999	2003/2004	2,809	Actual
1999/2000	2004/2005	2,720	Actual
2000/2001	2005/2006	2,672	Actual
2001/2002	2006/2007	2,599	Actual
2002/2003	2007/2008	2,657	Actual
2003/2004	2008/2009	2,742	Actual
2004/2005	2009/2010	2,656	Actual
2005/2006	2010/2011	2,649	Actual
2006/2007	2011/2012	2,734	Actual
2007/2008	2012/2013	2,737	Actual
2008/2009	2013/2014	2,783	Actual
2009/2010	2014/2015	2,855	Actual
2010/2011	2015/2016	2,833	Actual
2011/2012	2016/2017	2,799	Actual
2012/2013	2017/2018	2,799	Estimate

Where estimated, the Sefton totals are subdivided by area on the basis of the percentage of the total number of births which occurred in that area averaged over the last three years and adjusted as necessary to take account of trends; details are provided in Table 4. The area births, expressed as a percentage of Sefton births vary from year to year and this in turn affects the projected number of pupils admitted to reception classes in any year.

Table 4: Area Births as a Percentage of Sefton Births in 2012

Area	% of Sefton Births
Bootle	24.9
Litherland	11.4
Crosby	16.2
Formby	5.0
Maghull & Aintree	10.3
Southport	32.2
SEFTON	100.0

Overall reception pupil numbers are then determined by establishing the relationship between the number of pupils who actually entered reception classes in the last three years and the number of births in the appropriate preceding years and then applying the three-year average to the births data.

For Sefton as a whole, this results in a slight increase in the number of pupils for whom primary school places must be provided. This increase in numbers varies slightly from year to year and is not evenly distributed across the different areas of the Borough as Table 5 shows.

Table 5: Relationship between Births and Intake into Reception Classes, 2013

Area	Reception Year Intake as % of Births in Appropriate Preceding Year
Bootle	85.0
Litherland	78.82
Crosby	118.75
Formby	132.75
Maghull & Aintree	157.75
Southport	99.10
SEFTON	104.63

Several factors contribute to this increase in pupil numbers. The shape of the Borough of Sefton and the extent to which a number of Sefton schools are located close to centres of population in neighbouring LEAs have resulted in a situation whereby a large number of extra-district pupils are able to gain admission to Sefton schools on distance criteria. In addition, there is a marked south-north population movement within Sefton and the movement of families impacts upon the demand for school places in both the origin and destination

areas. In the southern part of the Borough pupil turnover levels are very high. In some primary schools less than half of the pupils who entered as reception pupils are still on roll in Year 6. An increasing number of pupils are being admitted to Sefton schools from abroad, in particular from Eastern Europe, and these numbers can have a considerable effect on pupil projections.

The projected total number of primary pupils is calculated for each year by moving forward the numbers in the existing primary year groups and incorporating the projected number of reception pupils to be admitted in that year.

Secondary Pupil Numbers

Forecasts of secondary pupil numbers are calculated in a similar way to primary pupil numbers but are based upon the Year 6 cohort and the relationship between this and the intake into secondary schools.

At Authority level, the number of pupils admitted to Year 7 classes in secondary schools in September each year is slightly higher than the Year 6 cohort that left the primary sector at the end of the preceding term. However, at area level the pattern is one of contrasts, with some areas gaining large numbers of pupils whilst others lose significant numbers. Details for the cohort that transferred to the secondary phase in September 2013 are provided in Table 6.

Table 6: Changes in Pupil Numbers at Transition from Primary to Secondary Schools in 2013

Area	Year 7 Pupil Numbers (September 2013) as a % of Year 6 Pupil Numbers (January 2013)
Bootle	90.0
Litherland	67.0
Crosby	112.5
Formby	127.9
Maghull & Aintree	131.7
Southport	93.4
SEFTON	103.6

The projected total number of secondary pupils is calculated for each year by moving forward the numbers in the existing secondary year groups and incorporating the projected numbers of Year 7 pupils and post 16 pupils. However, as surplus places increase in some schools whilst other more popular schools remain full, adjustments are made to pupil projections to more accurately reflect these emerging trends.

Trends in Primary Pupil Numbers

Total Number of Primary Pupils

In recent years, the total number of primary pupils in Sefton peaked at 25,640 in the 1995/1996 academic year after a period of steady growth. Since then, numbers have decreased until 2011/12 when they rose slightly and the

Authority's current projections are for this trend to continue. Figure 2 and Table 7 provide full details of the actual (to January 2014) and projected total primary pupil numbers.

Figure 2: Primary Pupil Numbers in Sefton from 1996 to 2019

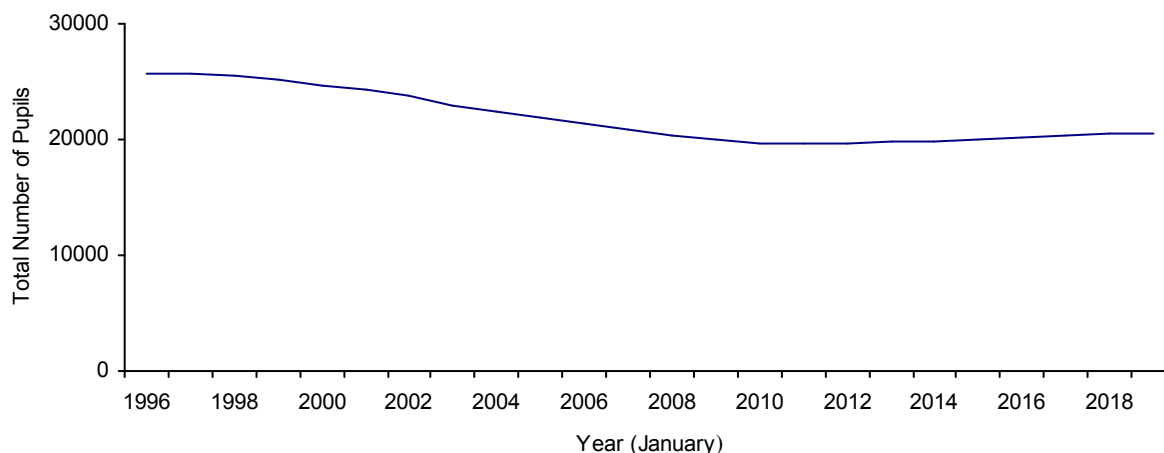


Table 7: Primary Pupil Numbers in Sefton from 1996 to 2019

Academic Year	Total Number of Primary Pupils (January)
1996/1997	25,613
1997/1998	25,487
1998/1999	25,128
1999/2000	24,666
2000/2001	24,233
2001/2002	23,708
2002/2003	23,005
2003/2004	22,423
2004/2005	21,839
2005/2006	21,324
2006/2007	20,814
2007/2008	20,319
2008/2009	19,945
2009/2010	19,725
2010/2011	19,668
2011/2012	19,736
2012/2013	19,742
2013/2014	19,903
2014/2015	20,046*
2015/2016	20,241*
2016/2017	20,429*
2017/2018	20,499*
2018/2019	20,548*

* Projected

Reception Pupil Numbers

During this period of a reducing total number of primary pupils, the number of pupils admitted to reception classes has fluctuated although the general trend is one of increased admission up to the 1995/96 academic year and a reduction in following years. It is anticipated that admission numbers will stabilise at

approximately 2,800 - 2,900 for the period of this Plan. Full details of actual and projected admission numbers for reception classes are provided in Figure 3 and Table 8.

Figure 3: Reception Pupil Numbers in Sefton from 1998 to 2019

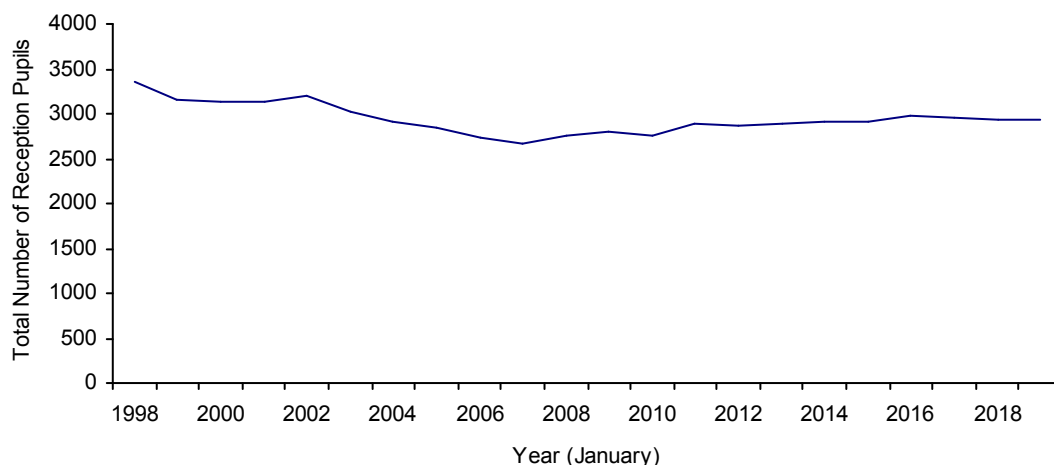


Table 8: Reception Pupil Numbers in Sefton from 1999 to 2019

Academic Year	Total Number of Reception Pupils (January)
1999/2000	3,127
2000/2001	3,143
2001/2002	3,190
2002/2003	3,026
2003/2004	2,910
2004/2005	2,842
2005/2006	2,730
2006/2007	2,668
2007/2008	2,753
2008/2009	2,810
2009/2010	2,754
2010/2011	2,883
2011/2012	2,874
2012/2013	2,893
2013/2014	2,910
2014/2015	2,913*
2015/2016	2,983*
2016/2017	2,955*
2017/2018	2,932*
2018/2019	2,932*

* Projected

The planning of school places for reception is undertaken in the context of the Government's requirement to keep infant class sizes at a maximum of 30 pupils.

Variations within Sefton

Detailed information for the areas of the Borough is provided in Table 9.
Table 10 provides detailed projections for the different areas

Table 9: Primary Pupil Numbers in Sefton, by Area, from 1999 to 2019

Year (January)	Bootle	Litherland	Crosby	Formby	Maghull & Aintree	Southport	Totals
1999	5,443	2,583	4,565	2,018	3,725	6,794	25,128
2000	5,271	2,499	4,468	2,015	3,663	6,750	24,666
2001	5,108	2,417	4,401	2,001	3,619	6,686	24,233
2002	4,916	2,338	4,300	1,955	3,533	6,666	23,708
2003	4,662	2,209	4,165	1,927	3,473	6,569	23,005
2004	4,483	2,116	4,033	1,881	3,394	6,516	22,423
2005	4,252	2,088	3,873	1,894	3,322	6,410	21,839
2006	4,085	2,102	3,762	1,843	3,263	6,269	21,324
2007	3,870	2,043	3,680	1,801	3,215	6,205	20,814
2008	3,745	1,960	3,595	1,780	3,158	6,081	20,319
2009	3,599	1,766	3,647	1,780	3,142	6,011	19,945
2010	3,570	1,729	3,579	1,769	3,132	5,946	19,725
2011	3,477	1,736	3,563	1,757	3,126	6,009	19,668
2012	3,371	1,727	3,658	1,733	3,154	6,093	19,736
2013	3,290	1,734	3,664	1,757	3,202	6,095	19,742
2014	3,362	1,762	3,714	1,740	3,206	6,119	19,903
2015	3,399*	1,809*	3,742*	1,722*	3,194*	6,180*	20,046*
2016	3,507*	1,843*	3,753*	1,697*	3,192*	6,249*	20,241*
2017	3,625*	1,858*	3,757*	1,665*	3,184*	6,340*	20,429*
2018	3,703*	1,856*	3,750*	1,621*	3,177*	6,392*	20,499*
2019	3,780*	1,864*	3,730*	1,553*	3,193*	6,428*	20,548*

*Projected

Table 10: Reception Pupil Numbers in Sefton, by Area, from 1999 to 2019

Year (January)	Bootle	Litherland	Crosby	Formby	Maghull & Aintree	Southport	Totals
1999	663	326	541	237	468	920	3,155
2000	693	301	543	258	457	875	3,127
2001	635	312	600	233	446	917	3,143
2002	666	314	574	235	458	943	3,190
2003	652	286	534	256	431	867	3,026
2004	583	266	514	249	443	855	2,910
2005	564	291	457	262	423	845	2,842
2006	543	292	468	209	414	804	2,730
2007	458	268	450	218	429	845	2,668
2008	506	277	487	228	431	824	2,753
2009	492	275	519	231	445	848	2,810
2010	474	261	509	231	460	819	2,754
2011	515	265	530	240	456	877	2,883
2012	490	253	533	267	445	886	2,874
2013	507	269	526	222	474	895	2,893
2014	538	267	534	237	446	888	2,910
2015	509*	262*	548*	234*	439*	921*	2,913*
2016	558*	270*	529*	232*	450*	944*	2,983*
2017	558*	264*	527*	223*	464*	919*	2,955*
2018	558*	264*	527*	200*	464*	919*	2,932*
2019	558*	264*	527*	200*	464*	919*	2,932*

* Projected

Trends in Secondary Pupil Numbers

Total Number of Secondary Pupils

Until the 2002/03 academic year, the total number of secondary pupils in Sefton increased each year as large cohorts from primary schools transferred through into the secondary sector. There was a reduction in numbers in 2003/04 and projections for the period covered by this Plan indicate that this trend for reductions in pupil numbers will continue in future years until 2017/18 when a slight increase is predicted. Details of the actual (to January 2014) and projected total secondary pupil numbers are provided in Figure 4 and Table 11. All forecasts for secondary pupil numbers are for September, the start of the academic year, as that is when school rolls are at a maximum.

Figure 4: Secondary Pupil Numbers in Sefton from 1999 to 2018/19

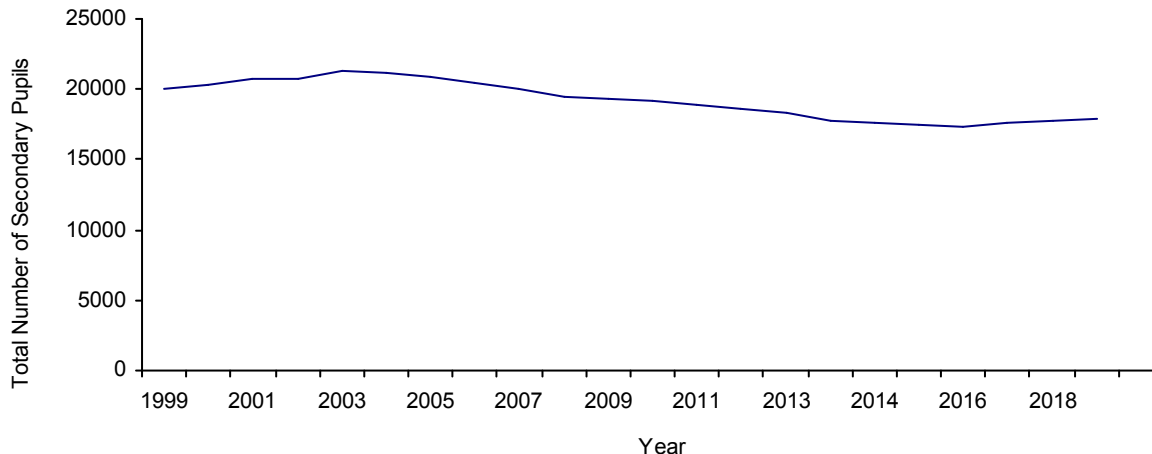


Table 11: Secondary Pupil Numbers in Sefton from 1999 to 2018/19

Year (January)	Total Number of Secondary Pupils
1999	20,057
2000	20,296
2001	20,676
2002	20,780
2003	21,281
2004	21,222
2005	20,919
2006	20,416
2007	19,962

2008	19,469
2009	19,300
2010	19,207
2011	18,869
2012	18,603
2013	18,365
2014	17,895
2014*	17,679
2015*	17,411
2016*	17,242
2017*	17,353
2018*	17,484
2019*	17,601
2020*	17,738

* September forecasts

At Authority level, the reduction in secondary pupil numbers is continuing as the smaller cohorts admitted to primary schools in the last few years begin to feed through into the secondary sector during the period covered by this Plan but they start to rise again towards the end of this period.

Year 7 Pupil Numbers

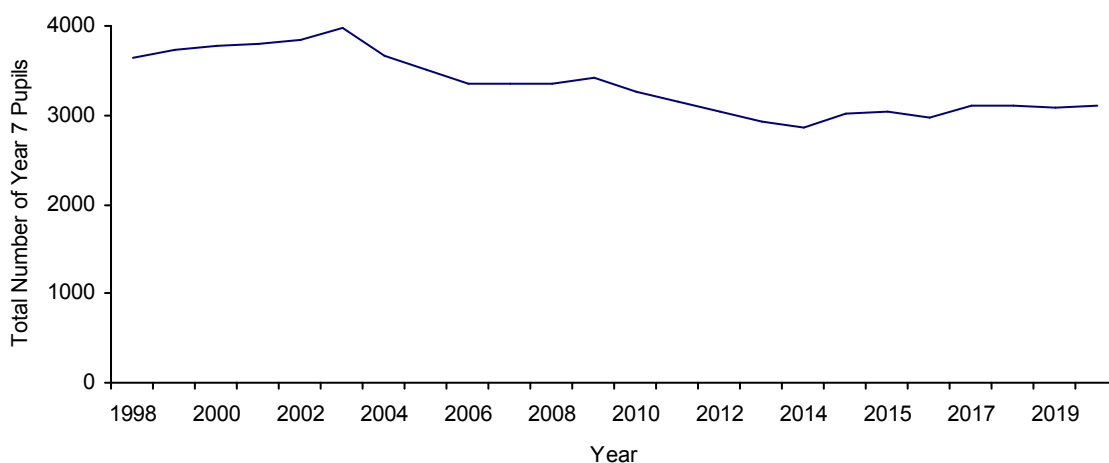
The number of pupils admitted to Year 7 classes in secondary schools in Sefton peaked in the 2002/03 academic year, with a reduction of pupil numbers in 2003/04. However, as births and subsequently primary pupil numbers stabilise this will in turn affect secondary pupil numbers in future years. Details of actual and projected admission numbers for Year 7 classes are provided in Table 12 and Figure 5.

Table 12: Year 7 Pupil Numbers in Sefton 1999 to 2019/20

Year (January)	Total Number of Year 7 Pupils
1999	3,728
2000	3,769
2001	3,797
2002	3,850
2003	3,971
2004	3,661
2005	3,512
2006	3,362
2007	3,358
2008	3,349
2009	3,430
2010	3,265
2011	3,141
2012	3,049
2013	2,931
2014	2,859
2014*	3,017
2015*	3,047
2016*	2,974
2017*	3,112
2018*	3,097
2019*	3,073
2020*	3,101

* September forecasts

Figure 5: Year 7 Pupil Numbers in Sefton 1999 to 2019/20



Sixth Form Pupil Numbers

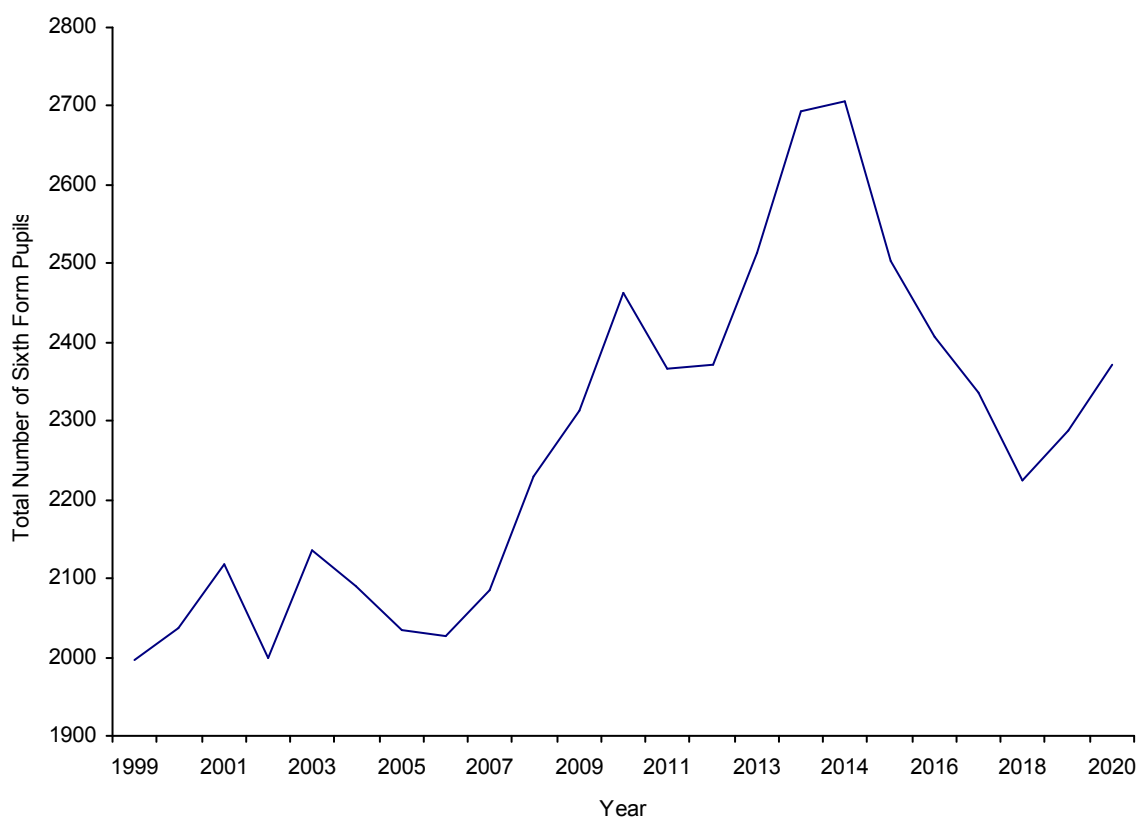
The number of 6th form pupils in maintained schools is expected to continue to fluctuate during the period covered by this Plan. This reflects the size of the contributory cohorts in those parts of the Borough where post-16 provision is school based and includes pupils attending South Sefton College which caters for pupils from all five schools in South Sefton. These projections are based upon current staying on rates which are expected to increase over the next few years as the participation age is raised to 18 by 2015. Ten of the 19 secondary schools in Sefton provide post-16 places. In Formby and Maghull and Aintree all secondary schools have a sixth form and in Southport provision is restricted to the Catholic sector. It is anticipated that the sixth form centre may affect post-16 numbers in the south of the Borough and could attract more students from the Liverpool area. This effect has not been taken into account in the details of projected sixth form pupil numbers which are provided in Table 13 and Figure 6.

Table 13: Sixth Form Pupil Numbers in Sefton 1999 to 2019/20

Year (January)	Total Number of Sixth Form Pupils
1999	1,997
2000	2,038
2001	2,117
2002	1,998
2003	2,136
2004	2,089
2005	2,034
2006	2,027
2007	2,085
2008	2,230
2009	2,312
2010	2,463
2011	2,367
2012	2,371
2013	2,513
2014	2,694
2014*	2,707
2015*	2,504
2016*	2,407
2017*	2,335
2018*	2,225
2019*	2,288
2020*	2,371

* September forecasts

Figure 6: Sixth Form Pupil Numbers in Sefton 1999 to 2019/20



Projected numbers are for September, the start of the academic year, when sixth form pupil numbers are at their highest. The number falls by the time of the Schools Census in January: some pupils decide not to continue with their chosen course of study, others find employment. As a result of this the sixth form pupil numbers may be less than projected.

Variations within Sefton

The number of secondary pupils within Sefton as a whole, and also in the Bootle, Litherland, Crosby and Maghull and Aintree areas, peaked in the 2002/03 academic year. The peak occurred in Formby and Southport a year later in 2003/04.

Table 14: Secondary Pupil Numbers in Sefton, by Area, from 1999 to 2019/2020

Year (January)	Bootle	Litherland	Crosby	Formby	Maghull & Aintree	Southport	Totals
1999	3,240	1,651	4,356	1,970	4,209	4,631	20,057
2000	3,269	1,686	4,394	1,988	4,280	4,679	20,296
2001	3,345	1,769	4,506	1,981	4,280	4,795	20,676
2002	3,413	1,778	4,533	1,985	4,194	4,877	20,780
2003	3,554	1,829	4,643	2,100	4,226	4,929	21,281
2004	3,529	1,763	4,638	2,155	4,202	4,935	21,222
2005	3,413	1,730	4,557	2,116	4,184	4,919	20,919
2006	3,273	1,647	4,375	2,131	4,174	4,816	20,416
2007	3,142	1,562	4,242	2,230	4,171	4,615	19,962
2008	2,929	1,458	4,088	2,310	4,197	4,487	19,469
2009	2,776	1,395	4,097	2,296	4,210	4,526	19,300
2010	2,367	1,831	4,066	2,245	4,209	4,489	19,207
2011	2,273	1,765	4,026	2,180	4,159	4,466	18,869
2012	2,234	1,707	3,981	2,162	4,089	4,430	18,603
2013	2,388	1,434	4,015	2,116	4,058	4,354	18,365
2014	2,235	1,420	3,879	2,149	3,905	4,307	17,895
2014*	2,131	1,447	3,877	2,095	3,867	4,262	17,679
2015*	2,051	1,418	3,849	2,051	3,824	4,217	17,411
2016*	1,986	1,403	3,857	2,013	3,817	4,166	17,242
2017*	1,996	1,400	3,927	1,989	3,820	4,221	17,353
2018*	2,025	1,396	4,028	1,976	3,832	4,227	17,484
2019*	2,050	1,422	4,064	1,946	3,866	4,253	17,601
2020*	2,137	1,433	4,120	1,908	3,886	4,254	17,738

* September forecasts

As detailed elsewhere in this document, these projections are based on the transfer of pupils between Year 6 and Year 7 over the last three years. However, recent patterns of admission applications suggest that this relationship between the Year 6 cohort and corresponding Year 7 admissions is changing. As pupil numbers fall more places will become available and schools in some areas of the Borough may continue to be oversubscribed and take an increasing number of pupils from outside their traditional catchment areas. This will magnify the fall in Year 7 pupil numbers in some areas of the Borough whilst reducing the effect in areas such as Formby, Maghull and Crosby. Adjustments have therefore been made to the raw data to reflect

these emerging trends. Full details of actual and projected numbers are provided in Table 15.

Table 15: Year 7 Pupil Numbers in Sefton, by Area, from 1999 to 2019/20

Year (January)	Bootle	Litherland	Crosby	Formby	Maghull & Aintree	Southport	Totals
1999	684	358	750	336	687	912	3,728
2000	662	357	795	331	706	918	3,769
2001	689	358	765	312	694	974	3,797
2002	704	353	778	351	691	973	3,850
2003	763	366	808	370	711	953	3,971
2004	646	301	765	359	692	898	3,661
2005	564	311	700	336	703	897	3,512
2006	548	274	639	334	685	882	3,362
2007	569	256	650	354	690	839	3,358
2008	509	273	671	354	692	848	3,347
2009	507	268	701	354	705	895	3,430
2010	475	252	658	359	684	851	3,279
2011	428	205	627	357	712	812	3,141
2012	409	224	619	349	638	810	3,049
2013	426	196	616	299	636	758	2,931
2014	399	154	568	341	577	820	2,859
2014*	406	170	688	317	636	800	3,017
2015*	382	202	686	322	634	821	3,047
2016*	376	189	659	321	665	764	2,974
2017*	436	187	688	307	667	827	3,112
2018*	425	181	706	333	629	823	3,097
2019*	431	210	678	282	656	816	3,073
2020*	469	201	685	295	631	820	3,101

* September forecasts

These forecasts are based upon the number of pupils transferring from primary schools in the relevant years and therefore reflect variations in the size of year groups.

The number of sixth form pupils generally increased over the period to the 2000/01 academic year and numbers have since fluctuated, this is expected to continue over the next few years although this may vary in different areas of the Borough. The number of pupils in sixth forms will include pupils admitted from other areas. Details of actual and projected post 16 pupil numbers are provided in Table 16.

Table 16: Sixth Form Pupil Numbers in Sefton, by Area, from 1999 to 2018

Year (January)	Bootle & Litherland	Crosby	Formby	Maghull & Aintree	Southport	Totals
1999	150	660	269	723	195	1,997
2000	156	635	300	773	174	2,038
2001	167	714	293	796	147	2,117
2002	140	707	284	728	139	1,998
2003	140	738	365	749	144	2,136
2004	132	701	397	721	138	2,089
2005	142	712	351	695	134	2,034
2006	163	682	351	697	134	2,027
2007	134	705	411	702	133	2,085
2008	157	698	483	751	141	2,230
2009	161	756	493	752	150	2,312
2010	357	730	450	770	133	2,463
2011	474	653	393	697	150	2,367
2012	516	630	392	668	165	2,371
2013	550	711	395	692	165	2,513
2014	584	769	426	680	235	2,694
2014*	603	755	419	688	242	2,707
2015*	520	674	412	694	203	2,504
2016*	494	640	408	662	203	2,407
2017*	495	638	378	640	184	2,335
2018*	466	600	376	601	182	2,225
2019*	453	647	381	615	192	2,288
2020*	465	704	370	638	194	2,371

* September forecasts

CHANGES IN SCHOOL ORGANISATION CURRENTLY IN PROGRESS

Details of recent changes in school organisation are provided in Annex 2.

Primary Schools

The age range has been changed at six primary schools with effect from 1 September 2013 to allow them to provide additional nursery places for 2 year olds as part of the Government's Two Year Old Offer. The following schools now have additional nursery places for two year olds:

Christ Church CE Primary, Bootle – up to 16 places
Thomas Gray Primary, Bootle – up to 24 places
St Elizabeth's Catholic Primary, Litherland – up to 8 places
Lander Road Primary, Litherland – up to 16 places
Hudson Primary, Maghull – up to 16 places
Bishop David Sheppard CE Primary, Southport – up to 42 places

The number and distribution of school places in Sefton primary schools will continue to be reviewed on an annual basis.

Additional primary places are being provided at Birkdale Primary and Linaker Primary with effect from 1 September 2013. There are also plans to add additional places at Great Crosby Primary School with effect from 1 September 2015.

Secondary Schools

The number and distribution of school places in Sefton secondary schools will continue to be reviewed on an annual basis.

PART B

DATA FOR

GEOGRAPHICAL

AREAS

AREAS OF SEFTON



Bootle Schools

School Type
★ High
▲ Primary



© Crown Copyright and database rights
2013 Ordnance Survey. 100018192.

School Organisation Data Book
2014/2015 to 2018/2019

Numbers on Roll 2005 to 2014

School	January School Census												SC NOR October 2014 – Year Groups								
	N/S	AN	2005	2006	2007	2008	2009	2010	2011	2012	2013	2014	R	Y1	Y2	Y3	Y4	Y5	Y6	Total	
Bootle																					
Bedford Community Primary		60	375	390	373	381	369	392	382	387	390	398	60	59	58	60	61	56	52	406	
Daleacre Community Primary	N		44	0	0	0	0	0	0	0	0	0	Closed								
Grange Community Primary	NS	30	229	236	231	236	240	243	250	234	245	259	33	36	43	35	42	31	44	264	
Linacre Community Primary	N	30	190	192	176	168	164	176	176	168	169	170	27	28	20	28	25	18	19	165	
Netherton Moss Community Primary	N	30	177	195	165	151	145	142	133	115	133	149	30	29	23	8	14	20	21	145	
Netherton Park Community Primary	N		53	0	0	0	0	0	0	0	0	0	Closed								
Orrell Community Primary			140	0	0	0	0	0	0	0	0	0	Closed								
Roberts Community Primary	N		154	0	0	0	0	0	0	0	0	0	Closed								
Springwell Park Community Primary	N	60		288	289	285	271	264	265	283	279	296	50	59	41	49	48	28	33	308	
Thomas Gray Community Junior			0	0	0	0	0	0	0	0	0	0	Amalgamated								
Thomas Gray Community Infant	N		0	0	0	0	0	0	0	0	0	0	Amalgamated								
Thomas Gray Community Primary	N	30	285	300	290	270	224	197	181	186	178	197	30	30	25	25	26	29	27	192	
Christ Church CE Primary	N	45	349	378	360	355	353	340	324	299	298	303	43	44	42	41	44	35	44	293	
St Mary's CE Primary	N		96	0	0	0	0	0	0	0	0	0	Closed								
St Oswald's CE Primary	N	30	199	208	199	192	193	196	189	194	189	198	28	29	30	29	25	30	28	199	
Holy Spirit Catholic Primary	N	30	187	191	188	183	188	182	184	173	160	165	20	30	30	17	30	28	23	178	
Our Lady of Walsingham Junior			209	221	0	0	0	0	0	0	0	0	Amalgamated								
Our Lady of Walsingham Infant	N		141	133	0	0	0	0	0	0	0	0	Amalgamated								
Our Lady of Walsingham Primary	N	30			318	309	288	272	240	229	214	199	29	30	28	28	24	27	30	196	
St Benet's Catholic Primary	N		192	0	0	0	0	0	0	0	0	0	Closed								
St Benedict's Catholic Primary	N	30		323	297	272	258	242	235	219	211	203	30	30	29	28	25	28	31	201	
St James' Catholic Primary	N		200	214	0	0	0	0	0	0	0	0	Closed								
St Joan of Arc Catholic Primary	N		159	194	0	0	0	0	0	0	0	0	Closed								
All Saints Catholic Primary	N	60			387	363	340	339	321	301	293	288	49	45	45	46	32	28	33	278	
St Raymond's Catholic Primary			142	0	0	0	0	0	0	0	0	0	Closed								
St Monica's Catholic Primary	N	60	394	423	397	382	372	384	392	387	383	386	60	60	58	60	48	54	51	391	
St Robert Bellarmine Catholic Primary	N	30	195	199	200	198	194	201	205	196	202	211	32	30	30	28	29	30	28	207	
St Winefride & St Richard's Catholic Primary	N		142	0	0	0	0	0	0	0	0	0	Closed								
Total			555	4252	4085	3870	3745	3599	3570	3477	3371	3344	3422	521	539	502	482	473	442	464	3423

N = Nursery

S = Special Unit

AN = Admission Number (for 2014/15 academic year)

SC = School Census

Numbers on Roll 2005 to 2014

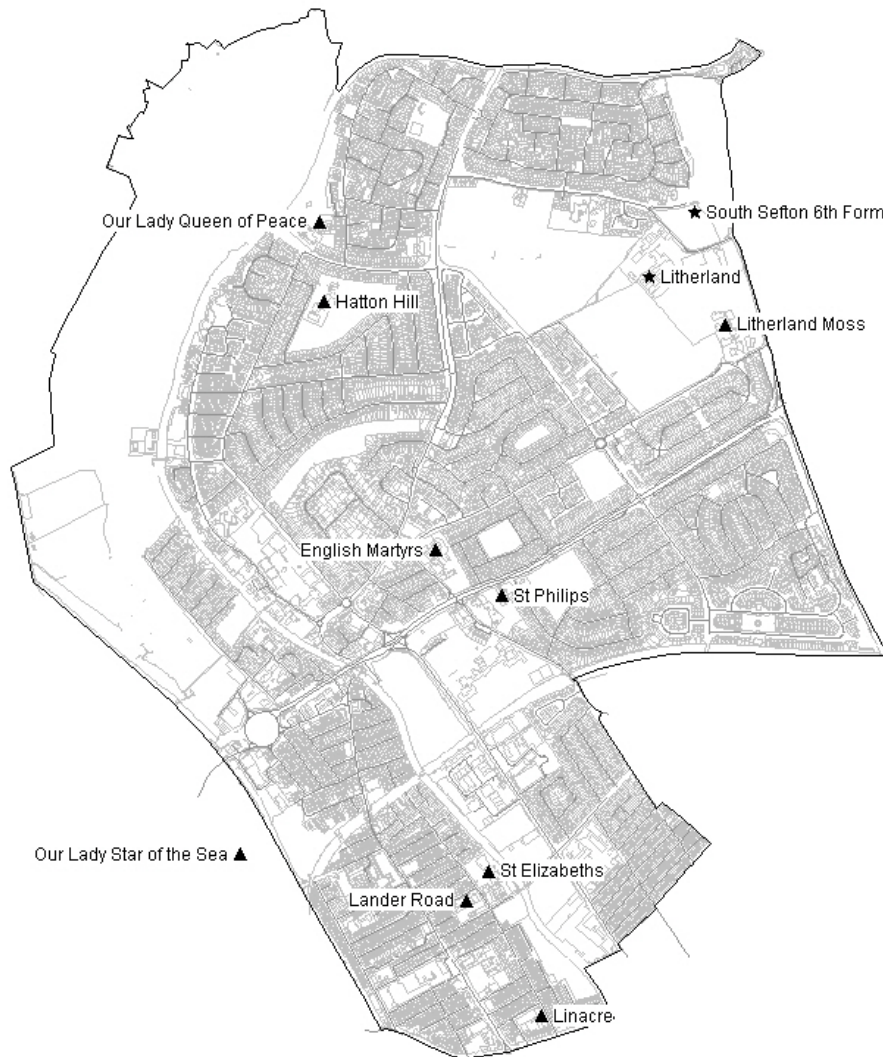
School	January School Census											SC NOR October 2013 – Year Groups							
	AN	2005	2006	2007	2008	2009	2010	2011	2012	2013	2014	Y7	Y8	Y9	Y10	Y11	Y12	Y13	Total
Bootle																			
Bootle High		639	574	513	411	327	0	0	0	0	0				Closed				
Hillside High	194	863	832	848	844	845	846	879	905	917	907	152	176	180	168	189			865
St George of England High		631	600	564	484	451	415	342	271	0	0				Closed				
St Ambrose Barlow Catholic High	120	436	453	425	426	434	438	430	437	427	385	77	71	86	70	77			381
Savio Salesian College	135	844	814	792	764	719	668	622	621	617	582	89	102	109	121	104			525
The Hawthorne's Free School	120	0	0	0	0	0	0	0	0	427	361	59	48	40	66	98			311
Total	569	3413	3273	3142	2929	2776	2367	2273	2234	2388	2235	377	397	415	425	468			2082

AN = Admission Number (for 2014/15 academic year)

SC = School Census

Data for South Sefton College is included in the Litherland area data.

Litherland Schools



School Type	
★	High
▲	Primary

© Crown Copyright and database rights
2013 Ordnance Survey. 100018192.

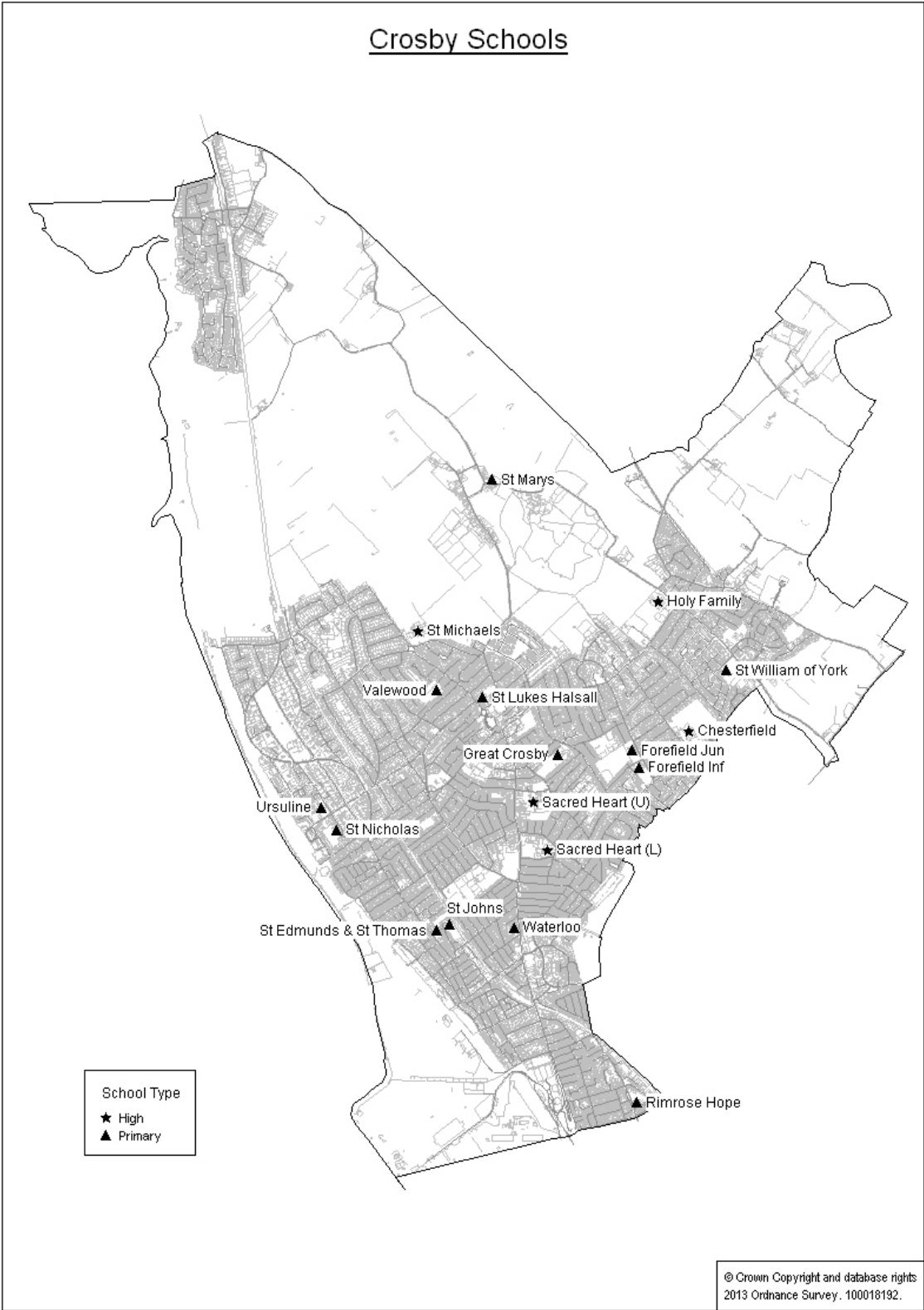
Numbers on Roll 2005 to 2014

School	January School Census												SC NOR October 2014 – Year Groups							
	N/S	AN	2005	2006	2007	2008	2009	2010	2011	2012	2013	2014	R	Y1	Y2	Y3	Y4	Y5	Y6	Total
Litherland																				
Beach Road Community Primary			153	179	165	144	0	0	0	0	0	0	Closed							
Hatton Hill Community Primary	N	60	348	342	339	320	314	307	307	309	310	307	54	45	55	45	46	41	42	328
Lander Road Community Primary	N	30	215	216	214	204	205	204	207	194	195	204	30	30	30	30	31	32	30	213
Litherland Moss Community Primary	N	30	115	113	102	104	101	99	110	112	110	129	19	20	22	20	18	23	21	143
St Philip's CE Primary		30	230	232	225	212	197	202	198	203	200	202	27	30	29	29	26	28	29	198
English Martyrs Catholic Primary	N	60	413	412	412	413	411	411	403	415	416	413	60	62	58	60	59	56	60	415
Our Lady Queen of Peace Catholic	N	30	130	134	122	112	103	92	85	98	93	102	19	15	12	18	12	12	11	99
Our Lady Star of the Sea Catholic	N	30	145	163	148	144	143	124	128	108	117	112	20	23	19	17	23	12	12	126
St Elizabeth's Catholic Primary	N	60	339	311	316	307	292	290	298	288	293	293	42	48	49	37	50	41	40	307
Total		330	2088	2102	2043	1960	1766	1729	1736	1727	1734	1762	271	273	274	256	265	245	245	1829

School	January School Census											SC NOR October 2014 – Year Groups							
	AN	2005	2006	2007	2008	2009	2010	2011	2012	2013	2014	Y7	Y8	Y9	Y10	Y11	Y12	Y13	Total
Litherland																			
Litherland High	240	867	839	818	784	752	956	889	876	884	836	135	154	175	169	146			779
St Wilfrid's Catholic High		863	808	744	674	643	568	402	315	0	0	Closed							
South Sefton College	(340)	0	0	0	0	0	307	474	516	550	584						328	256	584
Total	240	1730	1647	1562	1458	1395	1831	1765	1707	1434	1420	135	154	175	169	146	328	256	1363

N = Nursery
S = Special Unit
AN = Admission Number (for 2014/15 academic year)
SC = School Census

Crosby Schools



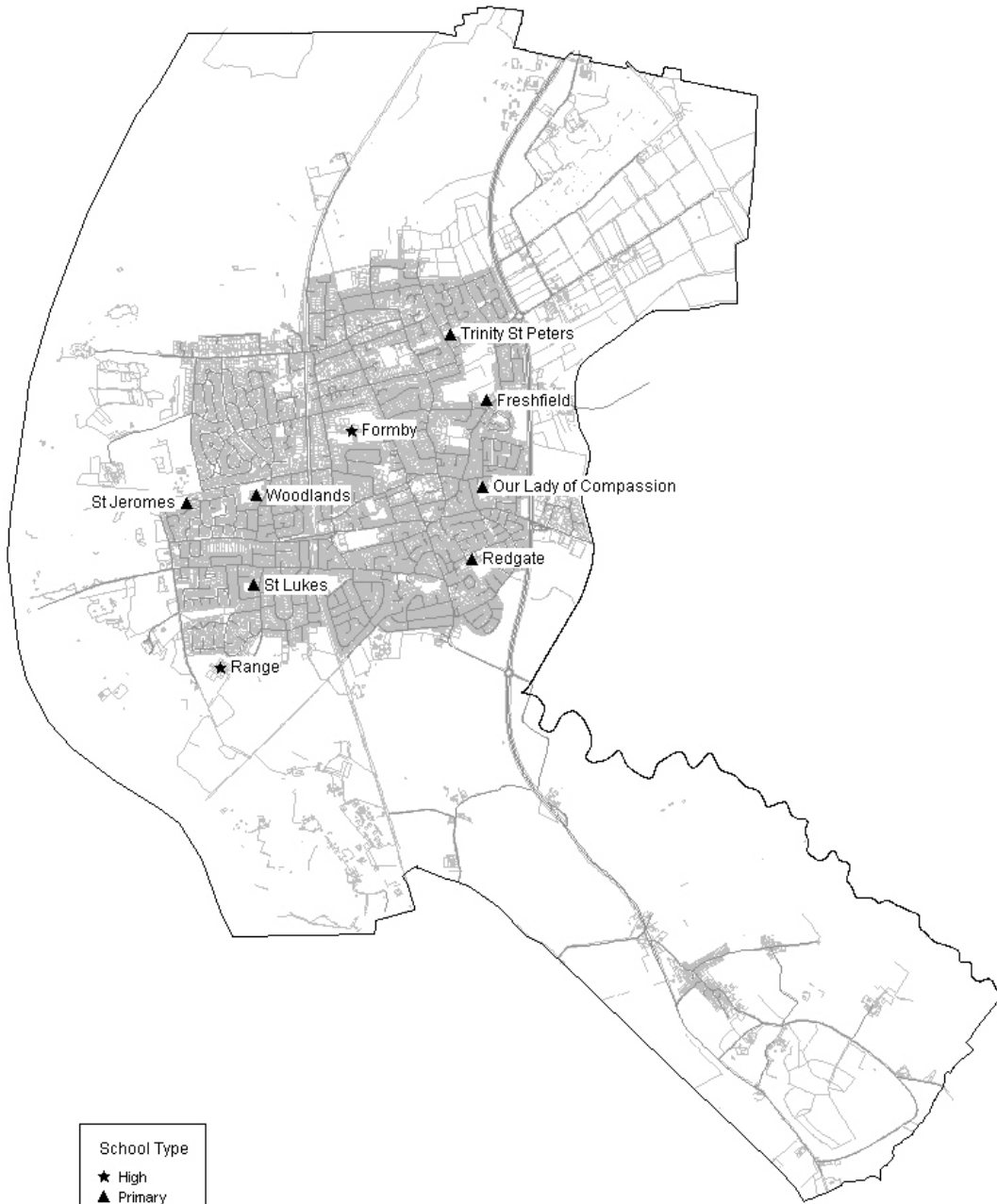
Numbers on Roll 2005 to 2014

School	January School Census												SC NOR October 2014 – Year Groups								
	N/S	AN	2005	2006	2007	2008	2009	2010	2011	2012	2013	2014	R	Y1	Y2	Y3	Y4	Y5	Y6	Total	
Crosby																					
Forefield Community Junior		90	386	391	396	385	370	358	351	356	358	357				89	93	90	87	359	
Forefield Community Infant		90	259	239	239	239	252	267	271	271	270	270	90	90	90					270	
Rawson Road Community Primary			103	0	0	0	0	0	0	0	0	0				Closed					
Thornton Community Primary			180	153	140	124	110	24	0	0	0	0				Closed					
Valewood Community Primary		30	181	196	201	211	210	207	206	211	204	205	29	30	30	31	30	30	29	209	
Waterloo Community Primary	S	60	455	424	404	354	319	311	319	343	354	384	59	53	50	60	53	56	66	397	
Rimrose Hope CE Primary	NS	45					267	254	266	271	286	288	41	39	38	40	44	39	35	276	
St John's CE Primary		30	130	159	143	146	137	132	127	144	172	178	28	29	25	26	25	19	21	173	
St Luke's Halsall CE Primary	N	30	234	232	213	214	207	213	202	198	207	209	29	30	31	31	30	30	30	211	
St Nicholas' CE Primary		30	184	192	191	197	193	197	198	205	205	205	30	30	29	30	30	29	29	207	
William Gladstone CE Primary			150	154	136	137	0	0	0	0	0	0				Closed					
Great Crosby Catholic Primary	N	90	626	621	635	634	632	631	634	640	636	636	89	90	91	91	90	89	90	630	
St Edmund's & St Thomas' Catholic Primary	N	45	308	325	313	303	299	308	304	317	319	320	45	45	47	43	44	42	43	309	
St Mary's Catholic Primary		15	87	94	94	93	90	92	100	102	101	98	15	15	15	15	15	16	14	105	
St William of York Catholic Primary	N	30	201	197	178	162	176	193	194	197	180	194	30	30	24	31	30	16	31	192	
Ursuline Catholic Primary		60	389	385	397	396	385	392	391	403	412	412	59	59	60	60	60	59	60	417	
Total		555	3873	3762	3680	3595	3647	3579	3563	3658	3704	3756	544	540	530	547	544	515	535	3755	

School	January School Census											SC NOR October 2014 – Year Groups							
	AN	2005	2006	2007	2008	2009	2010	2011	2012	2013	2014	Y7	Y8	Y9	Y10	Y11	Y12	Y13	Total
Crosby																			
Chesterfield High	224	1341	1285	1276	1252	1291	1304	1279	1278	1259	1177	191	173	186	203	217	109	72	1151
Manor High		881	0	0	0	0	0	0	0	0	0				Closed				
St Michael's CE High	138		819	731	649	571	534	510	478	542	558	95	97	99	71	100	34	30	526
Holy Family Catholic High	135	963	885	833	782	767	782	832	825	786	743	134	74	123	111	101	97	87	727
Sacred Heart Catholic High	216	1372	1386	1402	1405	1468	1446	1405	1400	1428	1401	216	215	217	216	207	127	182	1380
Total	713	4557	4375	4242	4088	4097	4066	4026	3981	4015	3879	636	559	625	601	625	367	371	3784

N = Nursery
S = Special Unit
AN = Admission Number (for 2014/15 academic year)
SC = School Census

Formby Schools



School Type
★ High
▲ Primary

© Crown Copyright and database rights
2013 Ordnance Survey. 100018192.

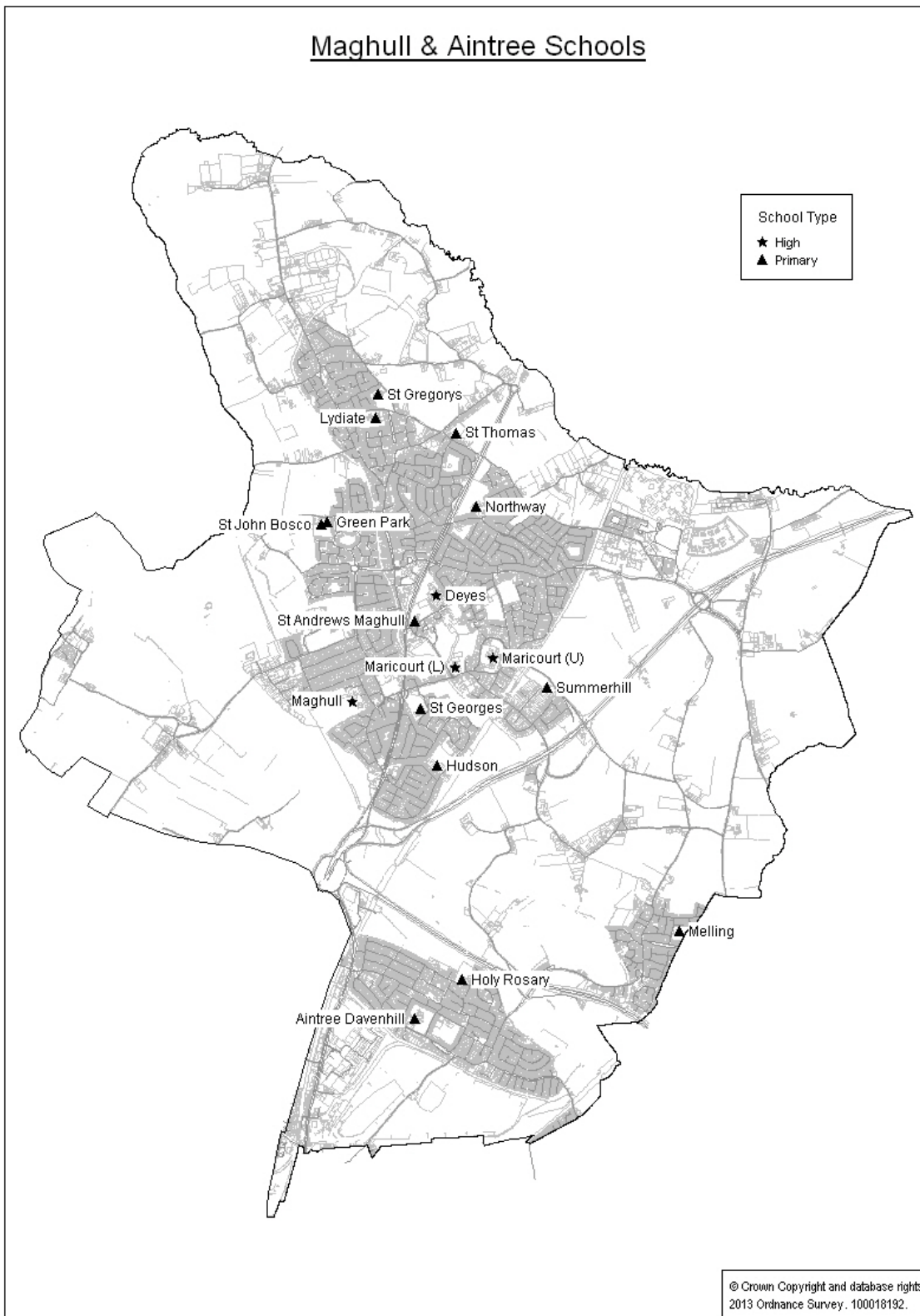
Numbers on Roll 2005 to 2014

School	January School Census												SC NOR October 2014 – Year Groups							
	N/S	AN	2005	2006	2007	2008	2009	2010	2011	2012	2013	2014	R	Y1	Y2	Y3	Y4	Y5	Y6	Total
Formby																				
Freshfield Community Primary	NS	30	220	205	198	212	211	225	215	213	223	224	30	29	31	31	34	33	31	219
Redgate Community Primary		30	149	153	139	140	146	160	156	152	163	144	20	14	18	29	21	22	27	151
Woodlands Community Primary		45	404	393	385	364	336	318	314	306	313	314	45	41	42	44	45	48	49	314
Holy Trinity CE Primary			63	0	0	0	0	0	0	0	0	0	Closed							
St Luke's CE Primary		60	381	395	405	415	425	427	426	423	411	416	56	59	50	60	65	65	61	416
St Peter's CE Primary			199	0	0	0	0	0	0	0	0	0	Closed							
Trinity St Peter's CE Primary	N	30		225	214	195	203	198	197	193	205	212	30	30	30	30	30	32	30	212
Our Lady of Compassion Catholic	N	30	266	262	256	247	246	228	234	230	231	227	23	30	30	48	31	31	32	225
St Jerome's Catholic Primary		30	212	210	204	207	213	213	215	216	216	214	30	30	26	32	31	31	32	212
Total		255	1894	1843	1801	1780	1780	1769	1757	1733	1762	1751	234	233	227	274	257	262	262	1749

School	January School Census											SC NOR October 2014– Year Groups								
	AN	2005	2006	2007	2008	2009	2010	2011	2012	2013	2014	Y7	Y8	Y9	Y10	Y11	Y12	Y13	Total	
Formby																				
Formby High	160	883	907	969	1017	1014	984	971	988	1002	1032	162	160	161	156	162	110	118	1029	
Range High	196	1233	1224	1261	1293	1282	1261	1209	1174	1114	1117	195	188	148	195	200	121	93	1140	
Total	356	2116	2131	2230	2310	2296	2245	2180	2162	2116	2149	357	348	309	351	362	231	211	2169	

N = Nursery
S = Special Unit
AN = Admission Number (for 2014/15 academic year)
SC = School Census

Maghull & Aintree Schools



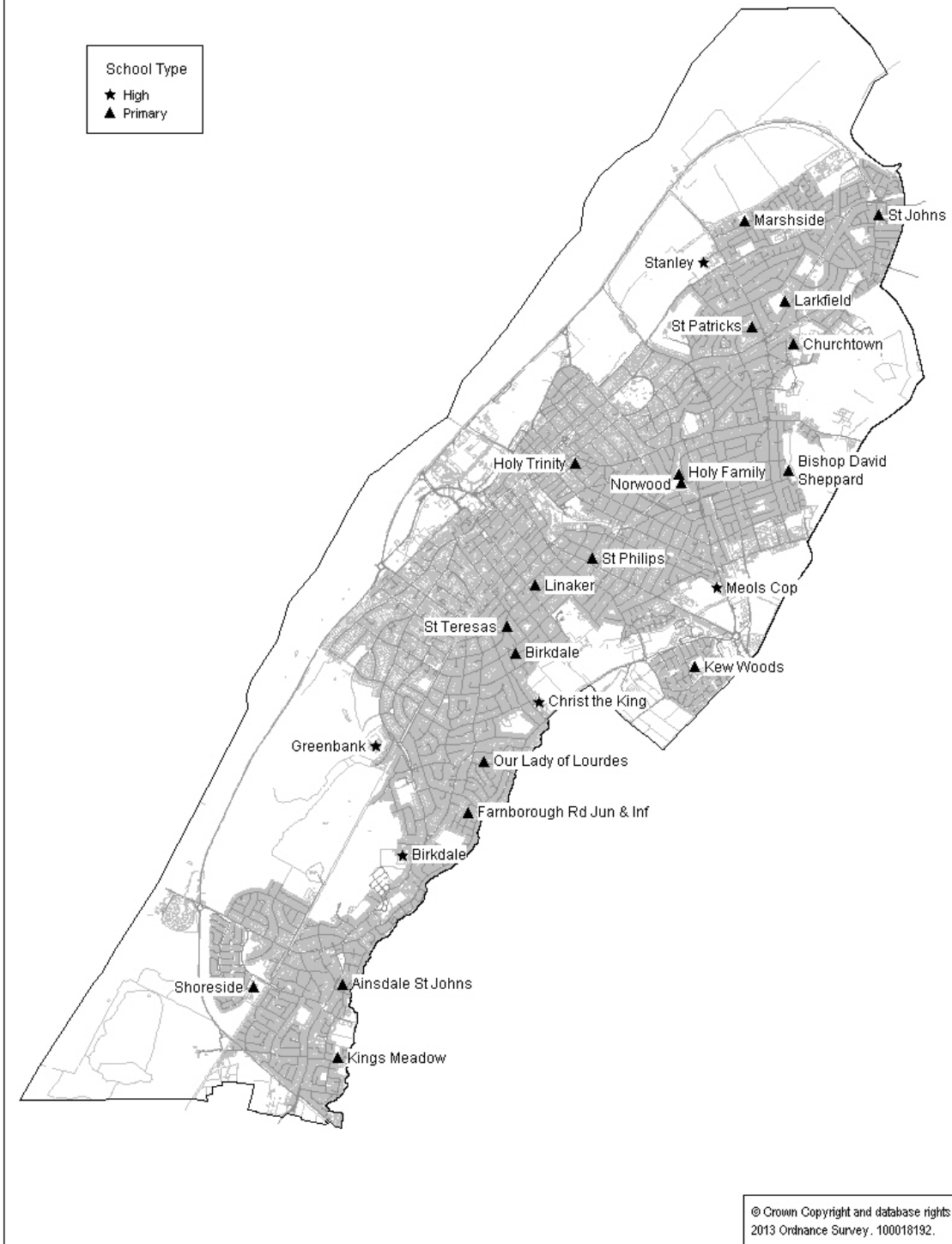
Numbers on Roll 2005 to 2014

School	January School Census												SC NOR October 2014 – Year Groups							
	N/S	AN	2005	2006	2007	2008	2009	2010	2011	2012	2013	2014	R	Y1	Y2	Y3	Y4	Y5	Y6	Total
Maghull / Aintree																				
Aintree Davenhill Community Primary	N	60	434	419	416	403	404	414	407	411	417	403	60	59	56	57	60	56	57	405
Green Park Community Primary	N	30	201	208	210	211	205	199	195	198	201	200	30	30	29	27	28	26	23	193
Hudson Community Primary	N	30	180	172	142	117	102	111	108	122	132	127	17	15	15	27	13	15	13	115
Lydiate Community Primary	N	45	288	286	278	272	284	275	278	287	290	301	32	38	39	45	41	45	42	282
Melling Community Primary		30	198	193	195	205	211	205	204	200	205	207	29	31	30	31	28	31	31	211
Northway Community Primary	NS	45	290	293	291	283	279	260	255	246	246	261	45	40	36	27	42	46	40	276
Summerhill Community Primary		30	205	210	208	205	204	199	198	196	195	199	31	26	30	27	27	25	29	195
Woodend/Maghull Primary			0	0	0	0	0	0	0	0	0	0	Closed							
St Andrew's CE Primary		60	413	377	374	356	361	355	360	360	368	348	34	38	57	46	50	57	57	339
St Thomas' CE Primary		30	177	177	169	170	169	182	173	181	192	200	30	30	31	29	30	27	31	208
Holy Rosary Catholic Primary	N	60	339	342	353	370	385	397	411	413	415	418	58	60	60	61	60	59	55	413
St George's Catholic Primary	N	30	237	237	205	191	175	167	164	164	165	167	22	29	30	21	30	23	19	174
St Gregory's Catholic Primary	N	30	170	159	178	179	164	166	173	176	184	180	30	29	29	25	30	31	20	194
St John Bosco Catholic Primary		30	190	190	196	196	199	202	200	200	201	205	28	29	30	26	29	28	30	200
Total		510	3322	3263	3215	3158	3142	3132	3126	3154	3211	3216	446	454	472	449	468	469	447	3205

School	January School Census											SC NOR October 2014 - Year Groups								
	AN	2005	2006	2007	2008	2009	2010	2011	2012	2013	2014	Y7	Y8	Y9	Y10	Y11	Y12	Y13	Total	
Maghull / Aintree																				
Deyes High	230	1439	1450	1428	1424	1433	1453	1417	1389	1391	1338	229	229	227	213	229	109	92	1328	
Maghull High	220	1280	1259	1265	1292	1284	1282	1259	1223	1161	1135	179	141	159	169	199	135	107	1089	
Maricourt Catholic High	253	1465	1465	1478	1481	1493	1474	1483	1477	1506	1432	224	212	251	237	246	128	98	1396	
Total	703	4184	4174	4171	4197	4210	4209	4159	4089	4058	3905	632	582	637	619	674	372	297	3813	

N = Nursery
S = Special Unit
AN = Admission Number (for 2014/15 academic year)
SC = School Census

Southport Schools



Numbers on Roll 2005 to 2014

School	January School Census												SC NOR October 2014 – Year Groups							
	N/S	AN	2005	2006	2007	2008	2009	2010	2011	2012	2013	2014	R	Y1	Y2	Y3	Y4	Y5	Y6	Total
Southport																				
Birkdale Community Primary	N	60	301	301	306	310	304	310	317	322	315	333	59	56	44	47	50	44	46	346
Churchtown Community Primary	N	120	770	795	822	820	819	817	809	825	828	819	119	120	114	120	116	116	120	825
Farnborough Road Junior		120	578	584	569	553	519	490	475	472	462	461				119	122	110	118	469
Farnborough Road Infant	N	120	404	356	348	346	358	351	345	345	359	352	121	115	120					356
Kew Woods Community Primary	N	60	310	306	306	307	309	315	316	336	347	369	57	56	60	60	48	45	48	374
Kings Meadow Community Primary	NS	30	132	139	142	138	134	130	135	148	159	161	31	22	29	26	26	20	23	177
Larkfield Community Primary		45	297	292	278	270	258	268	279	291	287	313	43	45	43	45	45	45	44	310
Linaker Community Primary	N	75	460	428	412	389	402	403	411	413	411	414	76	64	59	60	59	59	60	437
Marshside Community Primary		30	212	204	204	202	193	194	190	191	179	173	28	25	16	26	27	12	27	161
Norwood Community Primary		60	420	416	416	410	410	409	412	419	420	418	64	61	60	60	60	59	59	423
Shoreside Community Primary		30	292	288	268	267	256	222	225	215	214	211	24	26	31	29	30	31	35	206
Ainsdale CE Primary		30	205	207	196	212	211	209	204	207	213	214	29	29	30	30	32	28	30	208
Bishop David Sheppard CE	N	30	206	187	163	141	124	109	129	153	159	172	30	30	30	28	29	17	22	186
Holy Trinity CE Primary		30	193	190	188	200	203	206	207	208	208	209	30	31	31	31	30	32	30	215
St John's CE Primary		30	211	206	204	206	209	197	191	179	173	158	26	23	22	25	19	19	29	163
St Philip's CE Primary		30	208	211	209	209	208	210	211	214	212	214	30	30	30	30	30	31	30	211
Holy Family Catholic Primary		30	260	239	233	218	212	221	220	219	210	202	30	31	30	31	24	30	31	207
Our Lady of Lourdes Catholic*	NS	60	469	458	474	507	498	502	529	529	546	533	64	53	59	86	94	85	91	532
St John Stone Catholic Primary			125	109	96	0	0	0	0	0	0	0				Closed				
St Patrick's Catholic Primary		50	275	270	285	289	297	294	316	318	326	333	53	51	46	49	50	42	49	340
St Teresa's Catholic Infant	N	30	82	83	86	87	87	89	88	89	89	87	30	28	28					86
Total		920	6410	6269	6205	6081	6011	5946	6009	6093	6117	6146	944	896	882	902	891	825	892	6232

*Our Lady of Lourdes has an additional intake of 30 pupils at age 7.

N = Nursery

S = Special Unit

AN = Admission Number (for 2014/15 academic year)

SC = School Census

Numbers on Roll 2005 to 2014

School	January School Census											SC NOR October 2014 – Year Groups								
	AN	2005	2006	2007	2008	2009	2010	2011	2012	2013	2014	Y7	Y8	Y9	Y10	Y11	Y12	Y13	Total	
Southport																				
Ainsdale High		419	0	0	0	0	0	0	0	0	0				Closed					
Birkdale High	192	888	904	908	914	918	926	909	895	837	769	113	124	140	167	160				704
Greenbank High	206	1001	994	976	926	892	860	845	875	880	860	196	184	165	188	168				901
Meols Cop High	150	572	551	559	600	676	704	713	706	723	729	159	155	151	140	138				743
Stanley High	150	886	880	866	855	840	820	810	755	737	723	151	162	145	114	155				727
Ainsdale Hope CE High			338	132	0	0	0	0	0	0	0				Closed					
Christ the King Catholic High	205	1153	1149	1174	1192	1200	1179	1188	1199	1177	1226	177	200	175	209	204	183	114		1262
Total	903	4919	4816	4615	4487	4526	4489	4466	4430	4354	4307	796	825	776	818	825	183	114		4337

AN = Admission Number (for 2014/15 academic year)

SC = School Census

Annexes

ANNEX 1

PUPIL NUMBERS AND SCHOOL PLACES

Explanatory Note

Annex 1 provides details of pupil numbers and school places in Sefton and the different areas of the Borough. This information is provided for the primary, secondary, nursery and special sectors.

Unless stated otherwise, all pupil numbers are as at January in the relevant year. Actual pupil numbers do not include pupils educated in LEA designated special needs classes in mainstream schools. The pupil projections are the figures supplied to the Education Funding Agency as part of the School Capacity Collection 2014.

In the primary sector, the number of places is determined by multiplying each school's admission number by the number of year groups in the school unless a different admission number applies to a particular year group which is taken into account in the calculations.

In the secondary sector, the number of places is also determined from the admission number but takes account of the number of students in the school's sixth form where relevant.

The Net Capacity is a measure of the number of workplaces available based upon teaching accommodation.

SCHOOL PLACES IN SEFTON

A. Primary

1. Numbers and Types of Schools, January 2014

School Type	Community	CE		Catholic Aided
		Controlled	Aided	
Primary	30	6	10	24
Infant	2	-	-	1
Junior	2	-	-	0
Total	34	6	10	25

2. Number of School Places, January 2014

School Type	Community	CE		Catholic Aided
		Controlled	Aided	
Primary	9,449	1,950	2,100	7,330
Infant	630	-	-	90
Junior	840	-	-	0
Total	10,919	1,950	2,100	7,420

Grand Total	22,389
-------------	--------

3. Demand and Supply of Primary School Places 2013/14 to 2018/19

Year	Demand		Number of Places	Net Capacity
	Actual	Projected		
2013/14	19,903		22,389	21,767
2014/15		20,046		
2015/16		20,241		
2016/17		20,429		
2017/18		20,499		
2018/19		20,548		

4. Demand and Supply of Reception Places 2013/14 to 2018/19

Year	Demand		Number of Places
	Actual	Projected	
2013/14	2,910		3,152
2014/15		2,913	
2015/16		2,983	
2016/17		2,955	
2017/18		2,932	
2018/19		2,932	

SCHOOL PLACES IN SEFTON

B. Secondary

1. Numbers and Types of Schools, January 2014

School Type	Community	CE		Catholic Aided
		Controlled	Aided	
Secondary 11-16	6	-	0	2
Secondary 11-18*	5	-	1	4
Sixth Form College	1	-	-	-
Total	12	-	1	6

*Seven of these schools are now academies

2. Number of School Places, January 2014

School Type	Community	CE		Catholic Aided
		Controlled	Aided	
Secondary 11-16	5,699	-	0	600
Secondary 11-18	6,319	-	756	5,766
Free School	600	-	-	-
Sixth Form College	680	-	-	-
Total	13,298	-	756	6,366

Grand Total	20,420
-------------	--------

3. Demand and Supply of Secondary School Places 2013/14 to 2018/19

Year	Demand		Number of Places	Net Capacity
	Actual	Projected*		
2013/14	17,895		20,420	20,546
2014/15		17,679		
2015/16		17,411		
2016/17		17,242		
2017/18		17,353		
2018/19		17,484		

*September forecasts

4. Demand and Supply of Year 7 Places 2013/14 to 2018/19

Year	Demand		Total Number of Places
	Actual	Projected*	
2013/14	2,859		3,548
2014/15		3,017	
2015/16		3,047	
2016/17		2,974	
2017/18		3,112	
2018/19		3,097	

*September forecasts

SCHOOL PLACES IN BOOTLE

A. Primary

1. Numbers and Types of Schools, January 2014

2.

School Type	Community	CE		Catholic Aided
		Controlled	Aided	
Primary	6	1	1	6
Infant	0	-	-	0
Junior	0	-	-	0
Total	6	1	1	6

3. Number of School Places, January 2014

4.

School Type	Community	CE		Catholic Aided
		Controlled	Aided	
Primary	1,830	375	210	1,830
Infant		-	-	
Junior		-	-	
Total	1,830	375	210	1,830

Grand Total	4,245
-------------	-------

5. Demand and Supply of Primary School Places 2013/14 to 2018/19

Year	Demand		Number of Places	Net Capacity
	Actual	Projected		
2013/14	3,362		4,245	3,944
2014/15		3,399		
2015/16		3,507		
2016/17		3,625		
2017/18		3,703		
2018/19		3,780		

6. Demand and Supply of Reception Places 2013/14 to 2018/19

Year	Demand		Number of Places
	Actual	Projected	
2013/14	538		555
2014/15		509	
2015/16		558	
2016/17		558	
2017/18		558	
2018/19		558	

SCHOOL PLACES IN BOOTLE

B. Secondary

1. Numbers and Types of Schools, January 2014

School Type	Community	CE		Catholic Aided
		Controlled	Aided	
Secondary 11-16	1	-	-	1
Secondary 11-18	0	-	-	1
Free School	1			0
Total	2	-	-	2

2. Number of School Places, January 2014

School Type	Community	CE		Catholic Aided
		Controlled	Aided	
Secondary 11-16	962	-	-	1,404
Secondary 11-18	-	-	-	0
Free School	600			
Total	1,562	-	-	1,404

Grand Total	2,966
-------------	-------

3. Demand and Supply of Secondary School Places 2013/14 to 2018/19

Year	Demand		Number of Places	Net Capacity
	Actual	Projected*		
2013/14	2,235		2,966	3,107
2014/15		2,131		
2015/16		2,051		
2016/17		1,986		
2017/18		1,996		
2018/19		2,025		

*September forecasts

4. Demand and Supply of Year 7 Places 2012/13 to 2017/18

Year	Demand		Total Number of Places
	Actual	Projected*	
2013/14	399		614
2014/15		406	
2015/16		382	
2016/17		376	
2017/18		436	
2018/19		425	

*September forecasts

SCHOOL PLACES IN LITHERLAND

A. Primary

1. Numbers and Types of Schools, January 2014

School Type	Community	CE		Catholic Aided
		Controlled	Aided	
Primary	3	1	-	4
Infant	-	-	-	-
Junior	-	-	-	-
Total	3	1	-	4

2. Number of School Places, January 2014

School Type	Community	CE		Catholic Aided
		Controlled	Aided	
Primary	870	210	-	1,260
Infant	-	-	-	-
Junior	-	-	-	-
Total	870	210	-	1,260

Grand Total	2,340
-------------	-------

3. Demand and Supply of Primary School Places 2013/14 to 2018/19

Year	Demand		Number of Places	Net Capacity
	Actual	Projected		
2013/14	1,762		2,340	2,187
2014/15		1,809		
2015/16		1,843		
2016/17		1,858		
2017/18		1,856		
2018/19		1,864		

4. Demand and Supply of Reception Places 2013/14 to 2018/19

Year	Demand		Number of Places
	Actual	Projected	
2013/14	267		330
2014/15		262	
2015/16		270	
2016/17		264	
2017/18		264	
2018/19		264	

SCHOOL PLACES IN LITHERLAND

B. Secondary

1. Numbers and Types of Schools, January 2014

School Type	Community	CE		Catholic Aided
		Controlled	Aided	
Secondary 11-16	1	-	-	-
Secondary 11-18	-	-	-	-
Sixth Form College	1	-	-	-
Total	2	-	-	-

2. Number of School Places, January 2014

School Type	Community	CE		Catholic Aided
		Controlled	Aided	
Secondary 11-16	1,200	-	-	-
Secondary 11-18	-	-	-	-
Sixth Form College	680	-	-	-
Total	1,880	-	-	-

Grand Total	1,880
-------------	-------

3. Demand and Supply of Secondary School Places 2013/14 to 2018/19

Year	Demand		Number of Places	Net Capacity
	Actual	Projected*		
2013/14	1,420		1,880	1,798
2014/15		1,447		
2015/16		1,418		
2016/17		1,403		
2017/18		1,400		
2018/19		1,396		

*September forecasts

4. Demand and Supply of Year 7 Places 2013/14 to 2018/19

Year	Demand		Total Number of Places
	Actual	Projected*	
2013/14	154		240
2014/15		170	
2015/16		202	
2016/17		189	
2017/18		187	
2018/19		181	

*September forecasts

SCHOOL PLACES IN CROSBY

A. Primary

1. Numbers and Types of Schools, January 2014

School Type	Community	CE		Catholic Aided
		Controlled	Aided	
Primary	2	1	3	5
Infant	1	-	-	-
Junior	1	-	-	-
Total	4	1	3	5

2. Number of School Places, January 2014

School Type	Community	CE		Catholic Aided
		Controlled	Aided	
Primary	720	315	630	1,680
Infant	270	-	-	-
Junior	360	-	-	-
Total	1,350	315	630	1,680

Grand Total	3,975
-------------	-------

3. Demand and Supply of Primary School Places 2013/14 to 2018/19

Year	Demand		Number of Places	Net Capacity
	Actual	Projected		
2013/14	3,714		3,975	3,853
2014/15		3,742		
2015/16		3,753		
2016/17		3,757		
2017/18		3,750		
2018/19		3,730		

4. Demand and Supply of Reception Places 2013/14 to 2018/19

Year	Demand		Number of Places
	Actual	Projected	
2013/14	534		555
2014/15		548	
2015/16		529	
2016/17		527	
2017/18		527	
2018/19		527	

SCHOOL PLACES IN CROSBY

B. Secondary

1. Numbers and Types of Schools, January 2014

School Type	Community	CE		Catholic Aided
		Controlled	Aided	
Secondary 11-16	-	-	-	-
Secondary 11-18*	1	-	1	2
Total	1	-	1	2

*One of these schools is now an academy

2. Number of School Places, January 2014

School Type	Community	CE		Catholic Aided
		Controlled	Aided	
Secondary 11-16	-	-	-	-
Secondary 11-18	1,326	-	756	2,264
Total	1,326	-	756	2,264

Grand Total	4,347
-------------	-------

3. Demand and Supply of Secondary School Places 2013/14 to 2018/19

Year	Demand		Number of Places	Net Capacity
	Actual	Projected*		
2013/14	3,879		4,347	4,413
2014/15		3,877		
2015/16		3,849		
2016/17		3,857		
2017/18		3,927		
2018/19		4,028		

*September forecasts

4. Demand and Supply of Year 7 Places 2013/14 to 2018/19

Year	Demand		Total Number of Places
	Actual	Projected*	
2013/14	568		713
2014/15		688	
2015/16		686	
2016/17		659	
2017/18		688	
2018/19		706	

*September forecasts

SCHOOL PLACES IN FORMBY

A. Primary

1. Numbers and Types of Schools, January 2014

School Type	Community	CE		Catholic Aided
		Controlled	Aided	
Primary	3	1	1	2
Infant	-	-	-	-
Junior	-	-	-	-
Total	3	1	1	2

2. Number of School Places, January 2014

School Type	Community	CE		Catholic Aided
		Controlled	Aided	
Primary	795	420	210	420
Infant	-	-	-	-
Junior	-	-	-	-
Total	795	420	210	420

Grand Total	1,845
-------------	-------

3. Demand and Supply of Primary School Places 2013/14 to 2018/19

Year	Demand		Number of Places	Net Capacity
	Actual	Projected		
2013/14	1,740		1,845	1,785
2014/15		1,722		
2015/16		1,697		
2016/17		1,665		
2017/18		1,621		
2018/19		1,553		

4. Demand and Supply of Reception Places 2013/14 to 2018/19

Year	Demand		Number of Places
	Actual	Projected	
2013/14	237		255
2014/15		234	
2015/16		232	
2016/17		223	
2017/18		200	
2018/19		200	

SCHOOL PLACES IN FORMBY

B. Secondary

1. Numbers and Types of Schools, January 2014

School Type	Community	CE		Catholic Aided
		Controlled	Aided	
Secondary 11-16	-	-	-	-
Secondary 11-18*	2	-	-	-
Total	2	-	-	-

*These schools are now academies

2. Number of School Places, January 2014

School Type	Community	CE		Catholic Aided
		Controlled	Aided	
Secondary 11-16	-	-	-	-
Secondary 11-18	2,218	-	-	-
Total	2,218	-	-	-

Grand Total	2,218
-------------	-------

3. Demand and Supply of Secondary School Places 2013/14 to 2018/19

Year	Demand		Number of Places	Net Capacity
	Actual	Projected*		
2013/14	2,149		2,218	2,218
2014/15		2,095		
2015/16		2,051		
2016/17		2,013		
2017/18		1,989		
2018/19		1,976		

*September forecasts

4. Demand and Supply of Year 7 Places 2013/14 to 2018/19

Year	Demand		Total Number of Places
	Actual	Projected*	
2013/14	341		356
2014/15		317	
2015/16		322	
2016/17		321	
2017/18		307	
2018/19		333	

*September forecasts

SCHOOL PLACES IN MAGHULL & AINTREE

A. Primary

1. Numbers and Types of Schools, January 2014

School Type	Community	CE		Catholic Aided
		Controlled	Aided	
Primary	7	1	1	4
Infant	-	-	-	-
Junior	-	-	-	-
Total	7	1	1	4

2. Number of School Places, January 2014

School Type	Community	CE		Catholic Aided
		Controlled	Aided	
Primary	1,925	420	210	1,040
Infant	-	-	-	-
Junior	-	-	-	-
Total	1,925	420	210	1,040

Grand Total	3,595
-------------	-------

3. Demand and Supply of Primary School Places 2013/14 to 2018/19

Year	Demand		Number of Places	Net Capacity
	Actual	Projected		
2013/14	3,206		3,595	3,528
2014/15		3,194		
2015/16		3,192		
2016/17		3,184		
2017/18		3,177		
2018/19		3,193		

4. Demand and Supply of Reception Places 2013/14 to 2018/19

Year	Demand		Number of Places
	Actual	Projected	
2013/14	446		515
2014/15		439	
2015/16		450	
2016/17		464	
2017/18		464	
2018/19		464	

SCHOOL PLACES IN MAGHULL & AINTREE

B. Secondary

1. Numbers and Types of Schools, January 2014

School Type	Community	CE		Catholic Aided
		Controlled	Aided	
Secondary 11-16	-	-	-	-
Secondary 11-18*	2	-	-	1
Total	2	-	-	1

*Two of these schools are now academies

2. Number of School Places, January 2014

School Type	Community	CE		Catholic Aided
		Controlled	Aided	
Secondary 11-16	-	-	-	-
Secondary 11-18	2,775	-	-	1,523
Total	2,775	-	-	1,528

Grand Total	4,298
-------------	-------

3. Demand and Supply of Secondary School Places 2013/14 to 2018/19

Year	Demand		Number of Places	Net Capacity
	Actual	Projected*		
2013/14	3,905		4,298	4,303
2014/15		3,867		
2015/16		3,824		
2016/17		3,817		
2017/18		3,820		
2018/19		3,832		

*September forecasts

4. Demand and Supply of Year 7 Places 2013/14 to 2018/19

Year	Demand		Total Number of Places
	Actual	Projected*	
2013/14	577		703
2014/15		636	
2015/16		634	
2016/17		665	
2017/18		667	
2018/19		629	

*September forecasts

SCHOOL PLACES IN SOUTHPORT

A. Primary

1. Numbers and Types of Schools, January 2014

School Type	Community	CE		Catholic Aided
		Controlled	Aided	
Primary	9	1	4	3
Infant	1	-	-	1
Junior	1	-	-	-
Total	11	1	4	4

2. Number of School Places, January 2014

School Type	Community	CE		Catholic Aided
		Controlled	Aided	
Primary	3,309	210	840	1,100
Infant	360	-	-	90
Junior	480	-	-	-
Total	4,149	210	840	1,190

Grand Total	6,389
-------------	-------

3. Demand and Supply of Primary School Places 2013/14 to 2018/19

Year	Demand		Number of Places	Net Capacity
	Actual	Projected		
2013/14	6,119		6,389	6,470
2014/15		6,180		
2015/16		6,249		
2016/17		6,340		
2017/18		6,392		
2018/19		6,428		

4. Demand and Supply of Reception Places 2013/14 to 2018/19

Year	Demand		Number of Places
	Actual	Projected	
2013/14	888		942
2014/15		921	
2015/16		944	
2016/17		919	
2017/18		919	
2018/19		919	

SCHOOL PLACES IN SOUTHPORT

B. Secondary

1. Numbers and Types of Schools, January 2014

School Type	Community	CE		Catholic Aided
		Controlled	Aided	
Secondary 11-16*	4	-	-	-
Secondary 11-18	-	-	-	1
Total	4	-	-	1

*Two of these schools are academies

2. Number of School Places, January 2014

School Type	Community	CE		Catholic Aided
		Controlled	Aided	
Secondary 11-16	3,537	-	-	-
Secondary 11-18	-	-	-	1,175
Total	3,537	-	-	1,175

Grand Total	4,712
-------------	-------

3. Demand and Supply of Secondary School Places 2012/13 to 2017/18

Year	Demand		Number of Places	Net Capacity
	Actual	Projected*		
2013/14	4,307		4,712	4,707
2014/15		4,262		
2015/16		4,217		
2016/17		4,166		
2017/18		4,221		
2018/19		4,227		

*September forecasts

4. Demand and Supply of Year 7 Places 2012/13 to 2017/18

Year	Demand		Total Number of Places
	Actual	Projected*	
2013/14	820		922
2014/15		800	
2015/16		821	
2016/17		764	
2017/18		827	
2018/19		823	

*September forecasts

NURSERY PLACES IN SEFTON LEA Maintained

Area	Nursery Schools		Nursery Classes	
	No of Schools	Part Time Places	No of Classes	Part Time Places
Bootle	2	160	13	802*
Litherland	-	-	7	430*
Crosby	1	80	6	344
Formby	-	-	3	172
Maghull & Aintree	-	-	8	458*
Southport	1	80	9	642*
SEFTON	4	320	46	2,848

*Six primary schools now have additional places for two year olds which are included above.

POST 16 PROVISION

Area	Sector	Number of Schools	Number on Roll	
			January 2014	September 2014
Bootle/Litherland	Community	0	-	-
	Catholic Aided	0	-	-
	Community (6 th Form College)	1	584	584
Crosby	Community (Academy)	1	162	181
	Catholic Aided	2	508	493
	CE Aided	1	99	64
Formby	Community (Academy)	2	426	442
	Catholic Aided	0	-	-
Maghull & Aintree	Community (Academy)	2	439	443
	Catholic Aided	1	241	226
Southport	Community	0	-	-
	Catholic Aided	1	235	297
SEFTON	Community	6	1611	1650
	Catholic Aided	4	984	1016
	CE Aided	1	99	64

SPECIAL EDUCATIONAL NEEDS PLACES IN SEFTON

1. Special Schools in Sefton

School	Type of Special Needs Catered For	Number of Pupils*	Number of Places	Empty Places
Crosby High	Moderate learning difficulties	144	146	2
Merefield	Severe learning difficulties & autism	78	80	2
Newfield	Emotional & behavioural difficulties	80	81	1
Presfield	Moderate learning difficulties	77	72	0
Rowan Park	Severe learning difficulties & autism	134	132	0

*September 2014

School	Type of Special Needs Catered For	Age Range	Number of Places
Crosby High	Moderate learning difficulties	11-16	146
Merefield	Severe learning difficulties & autism	3-19	80
Newfield	Emotional & behavioural difficulties	5-16	81
Presfield	ASD provision	11-19	72
Rowan Park	Severe learning difficulties & autism	3-19	132

2. Special Bases in Sefton

Primary School	Type of Base	Number of Pupils*	Number of Places	Empty Places
Freshfield	Moderate learning difficulties	10	10	0
Grange	Moderate learning difficulties	11	10	0
Grange	Moderate learning difficulties/ emotional & behavioural difficulties	8	10	2
Grange	Autism	20	16	0
Grange	Language Units	24	20	0
Hudson	ASD Provision	3	8	5
Kings Meadow	Language Unit (2)	7	10	3
Northway	SPLD Unit	7	12	5
Our Lady of Lourdes	Autism	23	20	0
Rimrose Hope CE	Moderate learning difficulties (more complex needs)	16	20	4
Waterloo	ASD Provision 3x8 Pupils	28	30	2

*September 2014

Secondary School	Type of Base	Number of Pupils*	Number of Places	Empty Places
Meols Cop	Specific Learning Difficulties Unit (dyslexia)	14	12	0
Meols Cop	Autism	10	8	2
St Michael's CE	Specific Learning Difficulties Unit (dyslexia)	30	30	0

*September 2014

ANNEX 2

CHANGES IN SCHOOL ORGANISATION

Details of Recent Changes in School Organisation

Explanatory Note

Annex 2 details recent changes in school organisation including the dates on which these changes were agreed.

Statutory Proposals in Sefton 1999 to 2014

Publication Date	School	Description	Decision	Decision Maker	Decision Date
18/10/99	Our Lady of Lourdes Catholic Primary School	Prescribed Alteration - addition of a nursery unit	Approved	SOC	22/12/99
18/05/00	The Grange Primary School	Prescribed Alteration - to add SEN unit	LEA determined to implement	LEA	16/08/00
18/05/00	Thornton Primary School	Prescribed Alteration - to add SEN unit	LEA determined to implement	LEA	16/08/00
18/05/00	Waterloo Primary School	Prescribed Alteration - to add SEN unit	LEA determined to implement	LEA	16/08/00
19/05/00	Meols Cop High School	Prescribed Alteration - to add SEN unit	LEA determined to implement	LEA	16/08/00
07/12/00	St Elizabeth's Catholic Infant School	Closure of school - due to amalgamation	Approved	SOC	28/02/2001
07/12/00	St Elizabeth's Catholic Junior School	Closure of school - due to amalgamation	Approved	SOC	28/02/2001
07/12/00	St Elizabeth's Catholic Primary School	Establish new school - result of amalgamation	Approved	SOC	28/02/2001
24/05/01	Maghull Primary School	Closure of a school - cease to maintain	Approved	SOC	01/09/01
31/05/01	St Gregory's Catholic Primary School	Prescribed Alteration - addition of a nursery unit	Approved	SOC	01/09/01
11/01/02	Presfield School	Change age range & extend range of needs	Approved	SOC	10/04/02
11/01/02	Ronald House School	Change age range & extend range of needs	LEA determined to implement	LEA	08/05/02
11/01/02	Newfield School	Increase number of places	LEA determined to implement	LEA	08/05/02
14/06/02	Our Lady of Lourdes Catholic Primary School	Prescribed Alteration - to add SEN unit	Approved	SOC	29/08/02
20/06/02	St Robert Bellarmine Catholic Primary School	Prescribed Alteration - addition of a nursery unit	Approved	SOC	29/08/02
27/09/02	Holy Trinity CE Primary School, Southport	Reduction of Standard Number	Approved	SOC	12/12/02
28/11/02	School of the Good Shepherd	Closure of a school - cease to maintain	Approved	SOC	18/03/03
15/05/03	Orrell Primary School	Closure of a school - cease to maintain	LEA determined to implement	LEA	27/08/03

Statutory Proposals in Sefton 1999 to 2014 Continued

Publication Date	School	Description	Decision	Decision Maker	Decision Date
15/05/03	Roberts Primary School	Closure of a school - cease to maintain	LEA determined to implement	LEA	27/08/03
15/05/03	New school to replace Orrell/Roberts Primary Schools	Establish a new school to replace Orrell/Roberts	LEA determined to implement	LEA	27/08/03
05/02/04	Ainsdale High School	Proposal to discontinue school	Approved	SOC	21/04/04
05/02/04	Manor High School	Proposal to discontinue school	Approved	SOC	21/04/04
05/02/04	Ainsdale High School	Establish new Church of England VA school	Approved	SOC	21/04/04
05/02/04	Manor High School	Establish new Church of England VA school	Approved	SOC	21/04/04
06/05/04	Thomas Gray Infant School	Proposal to discontinue school due to amalgamation	LEA determined to implement	LEA	30/06/04
06/05/04	Thomas Gray Junior School	Proposal to discontinue school due to amalgamation	LEA determined to implement	LEA	30/06/04
06/05/04	Thomas Gray Primary School	Proposal to establish new primary school – result of amalgamation	LEA determined to implement	LEA	30/06/04
09/09/04	Holy Rosary Catholic Primary School	Proposal to establish a nursery class	Approved	SOC	24/11/04
09/12/04	Daleacre Primary School	Proposal to discontinue the school	Approved	SOC	02/03/05
09/12/04	Holy Trinity CE Primary School, Formby	Proposal to discontinue the school	Approved	SOC	02/03/05
09/12/04	Netherton Park Primary School	Proposal to discontinue the school	Approved	SOC	02/03/05
09/12/04	Rawson Road Primary School	Proposal to discontinue the school	Approved	Schools Adjudicator	16/05/05
09/12/04	St Benet's Catholic Primary School	Proposal to discontinue the school	Approved	SOC	02/03/05
09/12/04	St Benet's Catholic Primary School	Proposal to establish a new Catholic primary school	Approved	SOC	02/03/05
09/12/04	St Benet's Catholic Primary School	Proposal to discontinue the school and establish a new Catholic primary school	Confirmation of implementation date	SOC	22/04/05
09/12/04	St Mary's CE Primary School	Proposal to discontinue the school	Approved	Schools Adjudicator	16/05/05

Statutory Proposals in Sefton 1999 to 2014 Continued

Publication Date	School	Description	Decision	Decision Maker	Decision Date
09/12/04	St Peter's CE Primary School	Proposal to discontinue the school	Approved	SOC	02/03/05
09/12/04	St Peter's CE Primary School	Proposal to establish a new CE primary school	Approved	SOC	02/03/05
09/12/04	St Raymond's Catholic Primary School	Proposal to discontinue the school	Approved	SOC	02/03/05
09/12/04	St Raymond's Catholic Primary School	Proposal to discontinue the school	Confirmation of implementation date	SOC	22/04/05
09/12/04	St Winefride and St Richard's Catholic Primary School	Proposal to discontinue the school	Approved	Schools Adjudicator	16/05/05
10/02/05	St Edmund's and St Thomas Catholic Primary School	Proposal to establish a Nursery class	Approved	SOC	22/04/05
12/05/05	Merefield School	Prescribed Alteration – increase in pupil numbers	Approved	LEA	27/07/05
26/05/05	Presfield School	Prescribed Alteration – change in age range	Approved	LEA	10/08/05
07/07/05	Trinity St Peter's CE Primary School	Proposal to establish a nursery class	Approved	Schools Adjudicator	25/11/05
24/03/06	Ainsdale Hope CE High School	Proposal to discontinue the school	Approved	SOC	5/06/06
27/04/06	St James' Catholic Primary School	Proposal to discontinue the school	Approved	SOC	6/07/06
27/04/06	St Joan of Arc Catholic Primary School	Proposal to discontinue the school	Approved	SOC	6/07/06
27/04/06	Replacement School for St James/ St Joan of Arc Catholic Primary Schools	Proposal to establish a new Catholic Primary School	Approved	SOC	6/07/06
27/04/06	Our Lady of Walsingham Catholic Infant School	Proposal to discontinue the school due to amalgamation	Approved	SOC	6/07/06
27/04/06	Our Lady of Walsingham Catholic Junior School	Proposal to discontinue the school due to amalgamation	Approved	SOC	6/07/06
27/04/06	Our Lady of Walsingham Catholic Primary School	Proposal to establish a new Catholic Primary School – result of amalgamation	Approved	SOC	6/07/06
27/04/06	Forefield Infant School	Proposal to establish a nursery class	LEA determined to implement	LEA	12/07/06

Statutory Proposals in Sefton 1999 to 2014 Continued

Publication Date	School	Description	Decision	Decision Maker	Decision Date
22/06/06	Beach Road Community Primary School	Proposal to discontinue the school	Approved	SOC	4/09/06
22/06/06	William Gladstone CE Primary School	Proposal to discontinue the school	Approved	SOC	4/09/06
22/06/06	Replacement school for Beach Road and William Gladstone Primary Schools	Proposal to establish a new CE Primary School	Approved	SOC	4/09/06
08/03/07	Bootle High School	Proposal to discontinue the school	Approved	SOC	15/05/07
08/03/07	Litherland High School	Prescribed alteration - an increase in the admission number and an enlargement of the premises	Approved	SOC	15/05/07
08/03/07	South Sefton 16 to 19 Centre	Proposal to establish a new community secondary school for pupils between the ages of 16 and 19	LEA determined to implement	LEA	15/05/07
21/09/07	St John Stone Catholic Primary School	Proposal to discontinue the school	LEA determined to implement	LEA	13/12/07
30/04/09	Thornton Community Primary School	Proposal to discontinue the school	LEA determined to implement	LEA	23/06/09
30/04/09	Rimrose Hope CE Primary School	Prescribed alteration – change in designation of resourced provision from MLD to MLD with additional more complex needs	LEA determined to implement	LEA	23/06/09
30/04/09	Waterloo Community Primary School	Prescribed alteration – change in designation of resourced provision from MLD to ASD	LEA determined to implement	LEA	23/06/09
30/04/09	Presfield Community Special School	Prescribed alteration – change the designation of the school from MLD to ASD	LEA determined to implement	LEA	23/06/09
15/04/10	St George of England Community High School	Proposal to discontinue the school	LEA determined to implement	LEA	13/07/10
03/02/11	St Wilfrid's Catholic High School	Proposal to discontinue the school	LEA determined to implement	LEA	19/04/11
18/04/2013	Kings Meadow Community Primary School	Proposal to increase the admission number from 22 to 30	LEA determined to implement	LEA	19/06/13
06/11/13	Lander Road Community Primary School	Proposal to change the age range from 3 to 11 to 2 to 11	LEA determined to implement	LEA	16/01/14
06/11/13	Thomas Gray Community Primary School	Proposal to change the age range from 3 to 11 to 2 to 11	LEA determined to implement	LEA	16/01/14
06/11/13	Christ Church CE Primary School	Proposal to change the age range	LEA determined to implement	LEA	16/01/14

		from 3 to 11 to 2 to 11			
06/11/13	Hudson Community Primary School	Proposal to change the age range from 3 to 11 to 2 to 11	LEA determined to implement	LEA	16/01/14
06/11/13	St Elizabeth's Catholic Primary School	Proposal to change the age range from 3 to 11 to 2 to 11	LEA determined to implement	LEA	16/01/14
06/11/13	Bishop David Sheppard CE Primary School	Proposal to change the age range from 3 to 11 to 2 to 11	LEA determined to implement	LEA	16/01/14

SOC = School Organisation Committee

ANNEX 3

SCHOOL PLACES IN 2014

Empty Places and Surplus Places

Explanatory Note

Annex 3 provides details of the numbers of empty places and surplus places. This information is provided at Authority level and is summarised by sector and by area. In addition, this same level of detail is provided for individual schools. Surplus Places are taken from the DFE School Capacity Survey (SCAP - formerly Surplus Places Return). This return now uses May pupil numbers from the School Census return.

In the primary sector, the number of places is determined by multiplying each school's admission number by the number of year groups in the school. Where the number has changed in a particular year the original admission number still applies to the existing year groups until they have worked their way out of the school. The new number applies to all new pupils admitted after that date.

In the secondary sector, the number of places is also determined from the admission number but takes account of the number of students in the school's sixth form where relevant.

The Net Capacity is a measure of the number of places available based upon the teaching accommodation.

The number of empty places is the difference between the number of pupils on roll and the number of school places. This can also give an indication of potential overcrowding.

The measurement of surplus places is based upon the Net Capacity which is determined by the sizes of individual teaching areas. If a school's Net Capacity exceeds the number of pupils on roll, the numerical difference is the number of surplus places. No adjustment is made to figures to take account of those schools where the number of pupils on roll exceeds the Net Capacity. **For individual sectors and areas, therefore, the number of surplus places is not the actual difference between the number of pupils on roll and Net Capacity.**

SEFTON PUPIL NUMBERS AND PLACES, SUMMARY

Sector	NOR May 2014	Number of Places	Empty Places		Net Capacity	Surplus Places	
			No	%		No	%
PRIMARY							
Community	9,728	10,919	1,213	11.11	10,633	1,008	9.48
CE Controlled	1,718	1,950	232	11.90	1,878	160	8.52
CE Aided	2,006	2,100	94	4.48	2,033	70	3.44
Catholic Aided	6,606	7,420	814	10.97	7,223	676	9.36
TOTAL	20,058	22,389	2,353	10.51	21,767	1,914	8.79
SECONDARY							
Community	10,941	12,618	1,666	13.29	12,659	1,756	13.87
CE Controlled	-	-	-	-	-	-	-
CE Aided	539	756	217	28.73	864	325	37.62
Catholic Aided	5,739	6,366	627	9.85	6,425	768	11.95
6 th Form College	584	680	96	14.12	598	14	2.34
TOTAL	17,803	20,420	2,606	12.76	20,546	2,863	13.93
SECONDARY							
Co-educational	16,173	18,442	2,258	12.24	18,576	2,523	13.58
Boys	769	948	179	18.88	940	171	18.19
Girls	861	1,030	169	16.41	1,030	169	16.41
TOTAL	17,803	20,420	2,606	12.76	20,546	2,863	13.93

* For individual sectors and areas the number of surplus places is not the actual difference between the number of pupils on roll and Net Capacity as no adjustment is made to figures to take account of those schools where the number of pupils on roll exceeds the Net Capacity.

PRIMARY PUPIL NUMBERS AND PLACES, BY AREA

Area	NOR May 2014	Number of Places	Empty Places		Net Capacity	Surplus Places	
			No	%		No	%
Bootle							
Community	1,463	1,830	389	21.26	1,652	247	14.95
CE Controlled	301	375	74	19.73	315	14	4.44
CE Aided	200	210	10	4.76	210	10	4.76
Catholic Aided	1,450	1,830	380	20.77	1767	317	17.94
TOTAL	3,414	4,245	853	20.09	3,944	588	14.91
Litherland							
Community	641	870	229	26.32	840	199	23.69
CE Controlled	203	210	7	3.33	210	7	3.33
CE Aided	0	0	0	0.00	0	0	0.00
Catholic Aided	931	1,260	329	26.11	1,137	206	18.12
TOTAL	1,775	2,340	565	24.15	2,187	412	18.84
Crosby							
Community	1,216	1,350	134	9.93	1,257	44	3.50
CE Controlled	289	315	26	8.25	315	26	8.25
CE Aided	586	630	44	6.98	613	27	4.40
Catholic Aided	1,659	1,680	21	1.25	1,668	31	1.86
TOTAL	3,750	3,975	225	5.66	3,853	128	3.32
Formby							
Community	691	795	104	13.08	735	61	8.30
CE Controlled	419	420	1	0.24	420	1	0.24
CE Aided	211	210	-1	-0.48	210	0	0.00
Catholic Aided	441	420	-21	-5.00	420	0	0.00
TOTAL	1,762	1,845	83	4.50	1,785	62	3.47
Maghull/Aintree							
Community	1,692	1,925	233	12.10	1,894	202	10.67
CE Controlled	350	420	70	16.67	420	70	16.67
CE Aided	199	210	11	5.24	175	0	0.00
Catholic Aided	972	1,040	68	6.54	1,039	69	6.64
TOTAL	3,213	3,595	382	10.63	3,528	341	9.67
Southport							
Community	4,025	4,149	124	2.99	4,255	255	5.99
CE Controlled	156	210	54	25.71	198	42	21.21
CE Aided	810	840	30	3.57	825	33	4.00
Catholic Aided	1,153	1,190	37	3.11	1,192	53	4.45
TOTAL	6,144	6,389	245	3.83	6,470	383	5.92

*For individual sectors and areas the number of surplus places is not the actual difference between the number of pupils on roll and Net Capacity as no adjustment is made to figures to take account of those schools where the number of pupils on roll exceeds the Net Capacity.

SECONDARY PUPIL NUMBERS AND PLACES, BY AREA

Area	NOR May 2014	Number of Places	Empty Places		Net Capacity	Surplus Places	
			No	%		No	%
Bootle							
Community	1,266	1,562	296	18.95	1,608	342	21.27
CE	0	0	0	0	0	0	0
Catholic Aided	973	1,404	431	30.70	1,499	526	35.09
TOTAL	2,239	2,966	727	24.51	3,107	868	27.94
Litherland							
Community	822	1,200	378	31.50	1,200	378	31.50
CE	0	0	0	0	0	0	0
6 th Form College	584	680	96	14.12	598	14	2.34
Catholic Aided	0	0	0	0	0	0	0
TOTAL	1,406	1,880	474	25.21	1,798	392	21.80
Crosby							
Community	1,173	1,326	153	11.54	1,326	153	11.54
CE	539	756	217	28.73	864	325	37.62
Catholic Aided	2,122	2,264	142	6.28	2,223	138	6.21
TOTAL	3,834	4,347	513	11.79	4,413	532	12.06
Formby							
Community	2,143	2,218	75	3.37	2,218	113	5.09
CE	0	0	0	0	0	0	0
Catholic Aided	0	0	0	0	0	0	0
TOTAL	2,143	2,218	75	3.37	2,218	113	5.09
Maghull/Aintree							
Community	2,456	2,775	319	11.48	2,775	319	11.50
CE	0	0	0	0	0	0	0
Catholic Aided	1,424	1,523	99	6.50	1,528	104	6.81
TOTAL	3,880	4,298	418	9.72	4,303	423	9.83
Southport							
Community	3,081	3,537	445	12.58	3,532	451	12.77
CE	0	0	0	0	0	0	0
Catholic Aided	1,220	1,175	-45	-3.86	1,175	0	0.00
TOTAL	4,301	4,712	400	8.48	4,707	451	9.58

* For individual sectors and areas the number of surplus places is not the actual difference between the number of pupils on roll and Net Capacity as no adjustment is made to figures to take account of those schools where the number of pupils on roll exceeds the Net Capacity.

PRIMARY SCHOOLS: PUPIL NUMBERS AND PLACES

School	NOR May 2014	Number of Places	Empty Places		Net Capacity	Surplus Places	
			No	%		No	%
Bootle							
Bedford Primary	399	420	29	6.90	392	0	0.00
Grange Primary	261	210	-35	-16.67	210	0	0.00
Linacre Primary	169	210	39	18.57	210	41	19.52
Netherton Moss Primary	140	270	130	48.15	210	70	33.33
Springwell Park Primary	298	420	122	29.05	420	122	29.05
Thomas Gray Primary	196	300	104	34.67	210	14	6.67
Christ Church CE Primary	301	375	74	19.73	315	14	4.44
St Oswald's CE Primary	200	210	10	4.76	210	10	4.76
All Saints Catholic Primary	288	420	132	31.43	420	132	31.43
Holy Spirit Catholic Primary	169	210	41	19.52	210	41	19.52
Our Lady of Walsingham Catholic Primary	200	330	130	39.39	210	10	4.76
St Benedict's Catholic Primary	203	240	37	15.42	297	94	31.65
St Monica's Catholic Primary	380	420	40	9.52	420	40	9.52
St Robert Bellarmine Catholic Primary	210	210	0	0.00	210	0	0.00
Total	3,414	4,245	853	20.09	3,944	588	14.91

PRIMARY SCHOOLS: PUPIL NUMBERS AND PLACES

School	NOR May 2014	Number of Places	Empty Places		Net Capacity	Surplus Places	
			No	%		No	%
Litherland							
Hatton Hill Primary	308	420	112	26.67	420	112	26.67
Lander Road Primary	203	240	37	15.42	210	7	3.33
Litherland Moss Primary	130	210	80	38.10	210	80	38.10
St Philip's CE Primary	203	210	7	3.33	210	7	3.33
English Martyrs Catholic Primary	416	420	4	0.95	420	4	0.95
Our Lady Queen of Peace Catholic Primary	101	210	109	51.90	168	67	39.88
Our Lady Star of the Sea Catholic Primary	120	210	90	42.86	184	64	34.78
St Elizabeth's Catholic Primary	294	420	126	30.00	365	71	19.45
Total	1,775	2,340	565	24.15	2,187	412	18.84
Crosby							
Forefield Junior	357	360	3	0.83	360	3	0.83
Forefield Infant	270	270	0	0.00	267	0	0.00
Valewood Primary	209	210	1	0.48	210	1	0.48
Waterloo Primary	380	510	130	25.49	420	40	9.52
St John's CE Primary	172	210	38	18.10	193	21	10.88
St Luke's CE Halsall Primary	209	210	1	0.48	210	1	0.48
St Nicholas CE Primary	205	210	5	2.38	210	5	2.38
Rimrose Hope CE Primary	289	315	26	8.25	315	26	8.25
Great Crosby Catholic Primary	637	630	-7	-1.11	618	0	0.00
St Edmund's and St Thomas' Catholic Primary	318	315	-3	-0.95	315	0	0.00
St Mary's Catholic Primary	99	105	6	5.71	105	6	5.71
St William of York Catholic Primary	194	210	16	7.62	210	16	7.62
Ursuline Catholic Primary	411	420	9	2.14	420	9	2.14
Total	3,750	3,975	225	5.66	3,853	128	3.32

PRIMARY SCHOOLS: PUPIL NUMBERS AND PLACES

School	NOR May 2014	Number of Places	Empty Places		Net Capacity	Surplus Places	
			No	%		No	%
Formby							
Freshfield Primary	222	210	-12	-5.71	210	0	0.00
Redgate Primary	149	210	61	29.05	210	61	29.05
Woodlands Primary	320	375	55	14.67	315	0	0.00
St Luke's CE Primary	419	420	1	0.24	420	1	0.24
Trinity St Peter's CE Primary	211	210	-1	-0.48	210	0	0.00
Our Lady of Compassion Catholic Primary	228	210	-18	-8.57	210	0	0.00
St Jerome's Catholic Primary	213	210	-3	-1.43	210	0	0.00
Total	1,762	1,845	83	4.50	1,785	62	3.47
Maghull							
Aintree Davenhill Primary	405	420	15	3.57	420	15	3.57
Green Park Primary	195	210	15	7.14	208	13	6.25
Hudson Primary	120	210	90	42.86	180	60	33.33
Lydiate Primary	301	350	49	14.00	351	50	14.25
Melling Primary	209	210	1	0.48	210	1	0.48
Northway Primary	266	315	49	15.56	315	49	15.56
Summerhill Primary	196	210	14	6.67	210	14	6.67
St Andrew's CE Primary	350	420	70	16.67	420	70	16.67
St Thomas' CE Primary	199	210	11	5.24	175	0	0.00
Holy Rosary Catholic Primary	417	420	3	0.71	415	0	0.00
St George's Catholic Primary	168	210	42	20.00	210	42	20.00
St Gregory's Catholic Primary	183	210	27	12.86	210	27	12.86
St John Bosco Catholic Primary	204	200	-4	-2.00	204	0	0.00
Total	3,213	3,595	382	10.63	3,528	341	9.67

PRIMARY SCHOOLS: PUPIL NUMBERS AND PLACES

School	NOR May 2014	Number of Places	Empty Places		Net Capacity	Surplus Places	
			No	%		No	%
Southport							
Birkdale Primary	332	330	-2	-0.61	394	62	15.74
Churchtown Primary	823	840	17	2.02	840	17	2.02
Farnborough Road Junior	463	480	17	3.54	480	17	3.54
Farnborough Road Infant	355	360	5	1.39	348	0	0.00
Kew Woods Primary	367	360	-7	-1.94	399	32	8.02
Kings Meadow Primary	164	144	-20	-13.89	157	0	0.00
Larkfield Primary	309	330	21	6.36	311	2	0.64
Linaker Primary	412	435	23	5.29	493	81	16.43
Marshside Primary	166	210	44	20.95	210	44	20.95
Norwood Primary	421	420	-1	-0.24	413	0	0.00
Shoreside Primary	213	240	27	11.25	210	0	0.00
Ainsdale CE Primary	212	210	-2	-0.95	207	0	0.00
Bishop David Sheppard CE Primary	172	210	38	18.10	205	33	16.10
Holy Trinity CE Primary	213	210	-3	-1.43	210	0	0.00
St John's CE Primary	156	210	54	25.71	198	42	21.21
St Philip's CE Primary	213	210	-3	-1.43	203	0	0.00
Holy Family Catholic Primary	204	210	6	2.86	209	5	2.39
Our Lady of Lourdes Catholic Primary	529	540	11	2.04	515	0	0.00
St Patrick's Catholic Primary	337	350	13	3.71	378	41	10.85
St Teresa's Catholic Infant	83	90	7	7.78	90	7	7.78
Total	6,144	6,389	245	3.83	6,470	383	5.92

SECONDARY SCHOOLS: PUPIL NUMBERS AND PLACES

School	NOR May 2014	Number of Places	Empty Places		Net Capacity	Surplus Places	
			No	%		No	%
Bootle							
Hillside High	907	962	55	5.72	1008	101	10.02
The Hawthorne's Free School	359	600	241	40.17	600	241	40.17
St Ambrose Barlow Catholic College	389	600	211	35.17	600	211	35.17
Savio Salesian College	584	804	220	27.36	899	315	35.04
Total	2,239	2,966	727	24.51	3,107	868	27.94
Litherland							
Litherland High	822	1,200	378	31.50	1200	378	31.50
South Sefton 6 th Form College	584	680	96	14.12	598	14	2.34
Total	1,406	1,880	474	25.21	1,798	392	21.80
Crosby							
Chesterfield High	1,173	1,326	153	11.54	1,326	153	11.54
St Michael's CE High	539	756	217	28.73	864	325	37.62
Holy Family Catholic High	731	910	179	19.66	869	138	15.88
Sacred Heart Catholic High	1,391	1,354	-37	-2.71	1,354	0	0.00
Total	3,834	4,347	513	11.79	4,413	532	12.06

SECONDARY SCHOOLS: PUPIL NUMBERS AND PLACES

School	NOR May 2014	Number of Places	Empty Places		Net Capacity	Surplus Places	
			No	%		No	%
Formby							
Formby High	1,027	989	-38	-3.85	989	0	0.00
Range High	1,116	1,229	113	9.19	1,229	113	9.19
Total	2,143	2,218	75	3.37	2,218	113	5.09
Maghull							
Deyes High	1,334	1,426	92	6.45	1,426	92	6.45
Maghull High	1,122	1,349	227	16.80	1,349	227	16.83
Maricourt Catholic High	1,424	1,523	99	6.50	1,528	104	6.81
Total	3,880	4,298	418	9.72	4,303	423	9.83
Southport							
Birkdale High	769	948	179	11.28	940	171	18.19
Greenbank High	861	1,030	169	16.41	1,030	169	16.41
Meols Cop High	723	714	-20	-2.80	750	27	3.60
Stanley High	728	845	117	13.85	812	84	10.34
Christ the King Catholic High	1,220	1,175	-45	-3.86	1,175	0	0.00
Total	4,301	4,712	400	8.48	4,707	451	9.58

NURSERY PLACES IN NURSERY AND PRIMARY SCHOOLS

Nursery Class or School	Part-time Places	No of Part-time Pupils (Jan 2014)	No of Full-time Pupils (Jan 2014)	No of Empty Places (PT)
Bootle				
Christ Church CE Class	60+16 2yr old places	66		10
Grange Class	60	37		23
Holy Spirit Catholic Class	60	33		27
Linacre Class	60	29		31
Netherton Moss Class	60	36		24
Our Lady of Walsingham Catholic Class	60	37		23
Springwell Class	52	46		6
St Benedict's Catholic Class	60	26		34
All Saints Catholic Class	60	59		1
St Monica's Catholic Class	60	57		3
St Oswald's CE Class	60	40		20
St Robert Bellarmine Catholic Class	30	30		0
Thomas Gray Class	60+24 2yr old places	42		42
Cambridge School	80	80		0
Greenacre School	80	45		35
TOTAL	942	663	0	279
Litherland				
English Martyrs Catholic Class	60	54		6
Hatton Hill Class	60	52		8
Lander Road Class	60+16 2yr old places	69		7
Litherland Moss Class	60	33		27
Our Lady Queen of Peace Catholic Class	60	25		35
Our Lady Star of the Sea Catholic Class	30	19		11
St Elizabeth's Catholic Class	60+8 2yr old places	45		23
TOTAL	414	297	0	117

NURSERY PLACES IN NURSERY AND PRIMARY SCHOOLS

Nursery class or School	Part-time Places	No of Part-time Pupils (Jan 2014)	No of Full-time Pupils (Jan 2014)	No of Empty Places (PT)
Crosby				
Forefield Infant Class	52	52		0
Great Crosby Catholic Class	60	53		7
St Luke's CE Halsall Class	60	50		10
St Edmund's and St Thomas' Catholic	52	52		0
St William of York Catholic Class	60	43		17
Rimrose Hope CE Class	52	44		8
Sand Dunes School	80	36		44
TOTAL	416	330	0	86
Formby				
Freshfield Class	60	38		22
Trinity St Peter's CE Class	52	41		11
Our Lady of Compassion Catholic Class	60	23		37
TOTAL	172	102	0	70
Maghull & Aintree				
Aintree Davenhill Class	60	60		0
Green Park Class	60	45		15
Hudson Class	60+ 16 2yr old places	31		45
Lydiate Class	60	43		17
Northway Class	60	45		15
Holy Rosary Catholic Class	52	50		2
St George's Catholic Class	60	35		25
St Gregory's Catholic Class	30	26		4
TOTAL	458	335	0	123
Southport				
Birkdale Class	60	56		4
Bishop D Sheppard CE Class	60+42 2 yr old places	74		28
Churchtown Class	60	40		20
Farnborough Road Class	120	84		36
Kew Woods Class	60	49		11
Kings Meadow Class	60	40		20
Linaker Class	60	60		0
Our Lady of Lourdes Catholic Class	60	49		11
St Teresa's Catholic Class	60	49		11
Crossens School	80	61		19
TOTAL	722	562	0	160
GRAND TOTALS	3,124	2,289	0	835

ANNEX 4

DENOMINATIONAL PROVISION

THE CATHOLIC CHURCH Archdiocese of Liverpool

It is the policy of the Archdiocese to provide for every Baptised Catholic pupil a place within a Primary and Secondary school.

This provision is based on a parish network and each parish has a designated Primary and Secondary school which serves it.

This principle of provision for all Baptised Catholic pupils is reflected usually in the second Admission Criterion of each school in the Archdiocese.

Catholic Archdiocese of Liverpool

Parish Network within the Sefton LEA with Designated Primary and Secondary Schools

Table 1 Southport

Parish	Primary School	Secondary School
Holy Family Our Lady of Lourdes Sacred Heart St John Stone St Joseph St Marie St Patrick St Teresa	Holy Family Our Lady of Lourdes Our Lady of Lourdes Our Lady of Lourdes 1. St Teresa's Infant 2. Our Lady of Lourdes St Patrick's St Patrick's 1. St Teresa's Infant 2. Our Lady of Lourdes	Christ the King

Table 2 Maghull & Aintree

Parish	Primary School	Secondary School
Holy Rosary St George St Gregory Our Lady's St Kentigern	Holy Rosary St George's 1. St John Bosco 2. St Gregory's 1. St John Bosco 2. St Gregory's Holy Rosary	Maricourt

Table 3 Netherton

Parish	Primary School	Secondary School
Our Lady of Walsingham St Benet Holy Spirit	Our Lady of Walsingham St Benedict's Holy Spirit	St Ambrose Barlow

Table 4 Crosby

Parish	Primary School	Secondary School
St Edmund SS Peter and Paul St Thomas St Helen St Joseph	St Edmund's Great Crosby St Edmund's 1. Great Crosby 2. Ursuline Ursuline	Sacred Heart

Table 5 Bootle

Parish	Primary School	Secondary School
St Joan St James St Monica St Richard St Winefride St Robert Bellarmine	All Saints All Saints St Monica's St Robert Bellarmine	Savio

Table 6 Formby, Little Crosby, Thornton

Parish	Primary School	Secondary School
St William of York Our Lady of Compassion St Jerome St Anne The Holy Family Our Lady of Victories St Mary's	St William of York Our Lady of Compassion St Jerome's Our Lady of Compassion St Mary's St Mary's St Mary's	Holy Family

Table 7 Litherland

Parish	Primary School	Secondary School
English Martyrs Our Lady Queen of Peace St Elizabeth Our Lady Star of the Sea	English Martyrs Our Lady Queen of Peace St Elizabeth's Our Lady Star of the Sea	Holy Family (from 1/09/12) Holy Family (from 1/09/12) Savio (from 1/09/12) Savio (from 1/09/12)

ANNEX 5

DENOMINATIONAL PROVISION

THE CHURCH OF ENGLAND Diocese of Liverpool

It is the policy of the Liverpool Diocese to encourage Governing Bodies of Church of England Aided Schools to provide places for children whose parents wish them to have an education within an Anglican framework.

Each school determines its own admissions criteria in consultation with the Diocese and the Local Education Authority.

There is a statutory obligation placed upon the Governing Body to consult the Diocesan Board of Education where significant changes are envisaged. The Diocesan Boards of Education Measure (1991) is the authoritative document in this regard.

Whilst the above Measure has more impact upon voluntary aided schools, both voluntary aided and voluntary controlled schools maintain a close family relationship with the Diocese as well as with the Local Education Authority.